

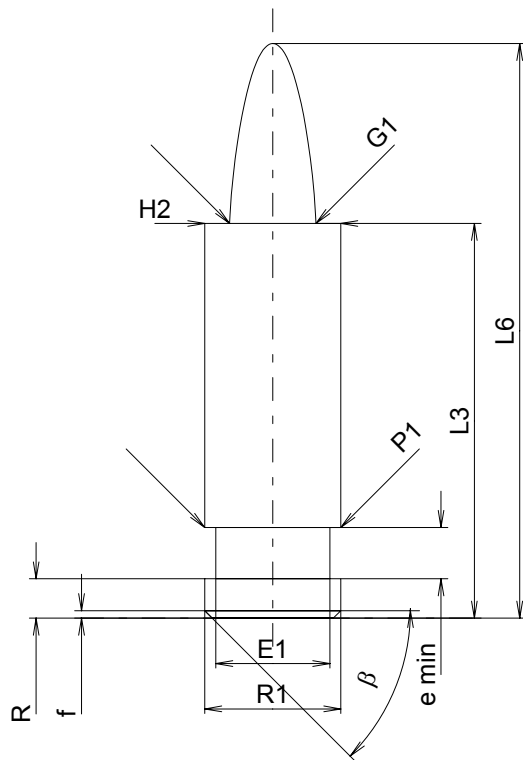
C.I.P.**5,7 mm UCC Voere**

TAB. XI

Date 94-05-25

Revision 96-06-06

Country of Origin: AT

**CARTRIDGE MAXI****Lengths**

L1	=	
L2	=	
L3 ¹⁾	=	26.10
L4	=	
L5	=	
L6	=	38.00

Case Head

R	=	2.60
R1	=	9.00
R3	=	
E	=	
E1	=	7.55
e min	=	3.40
delta	=	
f	=	0.50
beta	=	45°

Powder Chamber

P1	=	9.00
P2	=	

Junction Cone

alpha	=	
S	=	
r1 min	=	
r2	=	

Collar

H1	=	
H2 ¹⁾	=	9.00

Projectile

G1 ¹⁾	=	5.70
G2	=	
F	=	
L3+G ¹⁾	=	27.57

Pressures (Energies)**Method Transducer**

Pmax	=	4100 bar
PK	=	4715 bar
PE	=	5330 bar
M	=	15.50

Miscellaneous Dimensions

Fe	=	
delta L	=	

CHAMBER MINI**Lengths**

L1	=	
L2	=	
L3 ¹⁾	=	25.75

Breech

R	=	2.10
R1	=	9.00
R2	=	
R3	=	
r	=	

Powder Chamber

E	=	
P1 ¹⁾	=	10.95
P2	=	

Junction Cone

alpha ¹⁾	=	180°
S	=	
r1 max	=	1.00
r2	=	0.40

Collar

H1	=	
H2 ¹⁾	=	8.95

Commencement of Rifling

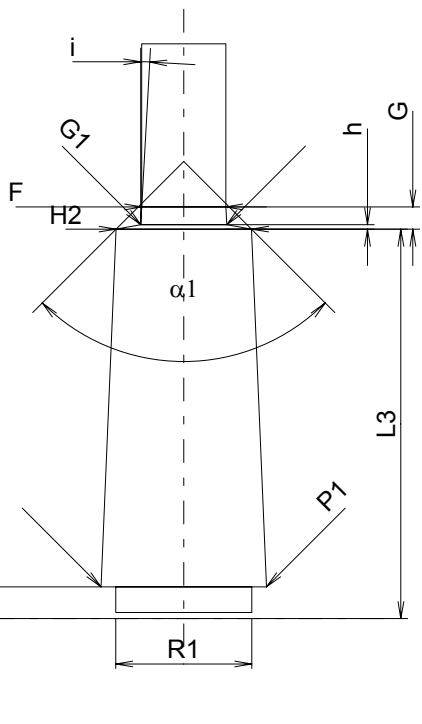
G1 ^{1)*}	=	5.69
G ^{1)*}	=	1.47
alpha1	=	90°
h*	=	0.30
s	=	
i ¹⁾	=	3°10'47"
w	=	

Barrel

F ^{1)*}	=	5.56
Z ¹⁾	=	5.69

Grooves

b	=	1.88
N	=	6
u	=	305.00
Q	=	25.03 mm ²



Scale 2:1

Dimensions in << mm >>
Dimensions and Tolerances for Proof Barrels
see Appendix CR 1.

Notes: 1) Check for safety reasons
* Basic dimensions