

C.I.P.**315 Blanc**

TAB.

VIII

Date

91-07-29

Revision

94-03-01

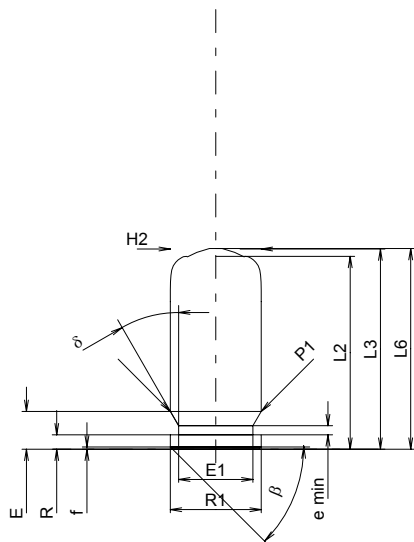
Country of Origin: DE

CARTRIDGE MAXI**CHAMBER MINI****Lengths**

L1	=	
L2 *	=	17.00
L3 ¹⁾	=	17.65
L4	=	
L5	=	
L6 ¹⁾	=	17.70

Lengths

L1	=	
L2	=	
L3 ¹⁾	=	16.20

**Case Head**

R	=	1.27
R1	=	8.00
R3	=	
E	=	3.33
E1	=	6.55
e min	=	0.80
δ	=	30°
f	=	0.20
β	=	45°

Breech

R	=	
R1	=	
R2	=	
R3	=	
r	=	

Powder Chamber

P1	=	8.00
P2	=	

Powder Chamber

E	=	
P1 ¹⁾	=	8.02
P2	=	

Junction Cone

α	=	
S	=	
r1 min	=	
r2	=	

Junction Cone

α	=	
S	=	
r1 max	=	
r2	=	

Collar

H1	=	
H2 ¹⁾	=	8.00

Collar

H1	=	
H2 ¹⁾	=	8.02

Projectile

G1	=	
G2	=	
F	=	
L3+G	=	

Commencement of Rifling

G1 ^{2)*}	=	6.00
G ^{2)*}	=	10.85
$\alpha 1$	=	90°
h	=	1.01
s *	=	10.00
i	=	45°
w	=	

Pressures (Energies)**Method Transducer**

Pmax	=	450 bar
PK	=	518 bar
PE	=	585 bar
M	=	7.00

Barrel

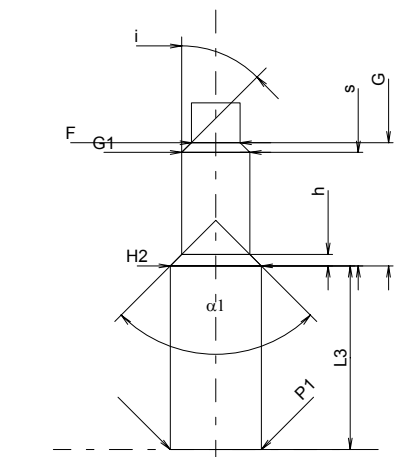
F ^{2)*}	=	4.30
Z	=	4.30

Grooves

b	=	
N	=	
u	=	
Q ²⁾	=	14.52 mm ²

Miscellaneous Dimensions

Fe	=	
delta L	=	



Scale 1.5:1

Dimensions in << mm >>
Dimensions and Tolerances for Proof Barrels
see Appendix CR 5.

Notes: 1) Check for safety reasons
2) Valid only for Proof Barrels
* Basic dimensions