

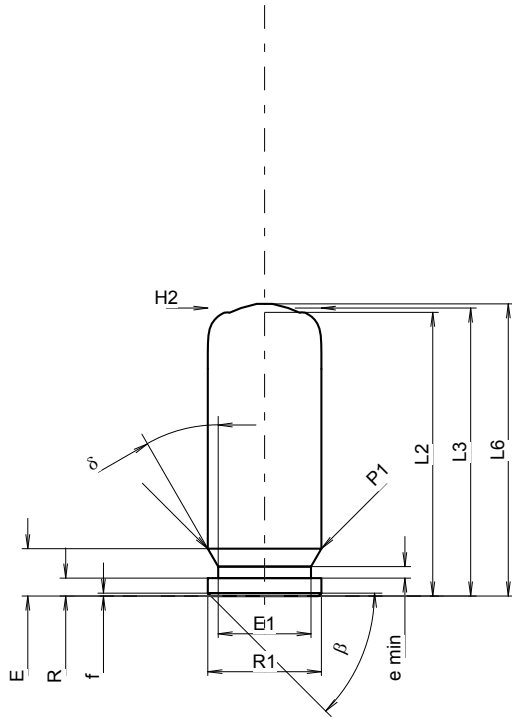
**C.I.P.****8 mm Blanc**

TAB. VIII

Datum 91-07-29

Revision 08-09-23

Ursprungsland: D

**PATRONE MAXI****Längen**

L1 *	=	20.00
L2 *	=	20.00
L3 1)	=	20.30
L4	=	
L5	=	
L6 1)	=	20.60

**Hülsenboden**

R	=	1.27
R1	=	8.00
R3	=	
E	=	3.33
E1	=	6.55
e min	=	0.80
delta	=	30°
f	=	0.20
beta	=	45°

**Pulverkammer**

P1	=	8.00
P2	=	

**Schulterkonus**

alpha	=	
S	=	
r1 min	=	
r2	=	

**Hülsenhals**

H1	=	
H2 1)	=	8.00

**Geschoss**

G1	=	
G2	=	
F	=	
L1+G	=	

**Drücke (Energien)****Mech. elektr. Wandler**

Pmax	=	450 bar
PK	=	518 bar
PE	=	585 bar
M	=	7.00

**Verschiedene Daten**

Fe	=	
delta L	=	

**PATRONENLAGER MINI****Längen**

L1	=	
L2	=	
L3 1)	=	19.20

**Stoßboden**

R	=	
R1	=	
R2	=	
R3	=	
r	=	

**Pulverkammer**

E	=	
P1 1)	=	8.02 +0.25
P2	=	

**Schulterkonus**

alpha	=	
S	=	
r1 max	=	
r2	=	

**Hülsenhals**

H1	=	
H2 1)	=	8.02

**Geschossübergang**

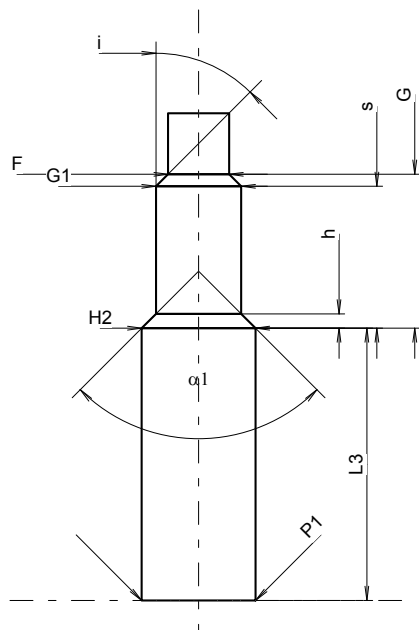
G1 2)*	=	6.00
G2)*	=	10.85
alpha1	=	90°
h	=	1.01
s*	=	10.00
i	=	45°
w	=	

**Lauf**

F 2)*	=	4.30
Z	=	4.30

**Züge**

b	=	
N	=	
u	=	
Q 2)	=	14.52 mm <sup>2</sup>



Maßstab 1.88:1

Maße in << mm >>  
Maße und Toleranzen für Messläufe  
siehe Anhang CR 5.

Bemerkungen: 1) Kontrolle aus Sicherheitsgründen  
2) Toleranz für Messlauf  
\* Grundmaße