

**C.I.P.****5 mm Rem. Mag.**

TAB.

V

Datum

84-06-14

Revision

00-06-07

Ursprungsland: US

**PATRONE MAXI****PATRONENLAGER MINI****Längen**

L1	=	20.22
L2	=	21.15
L3 <sup>1)</sup>	=	25.91
L4	=	
L5	=	
L6	=	32.89

**Längen**

L1 <sup>1)</sup>	=	20.32
L2	=	21.24
L3 <sup>1)</sup>	=	26.04

**Hülsenboden**

R <sup>1)</sup>	=	1.26	-0.18
R1	=	8.26	
R3	=		
E	=		
E1	=		
e min	=		
δ	=		
f	=		
β	=		

**Stoßboden**

R <sup>1)</sup>	=	1.26
R1	=	8.31
R2	=	
R3	=	
r	=	0.30

**Pulverkammer**

P1	=	6.58
P2*	=	6.58

**Pulverkammer**

E	=	
P1 <sup>1)</sup>	=	6.63
P2*	=	6.61

**Schulterkonus**

α*	=	50°
S*	=	27.28
r1 min	=	1.14
r2	=	1.78

**Schulterkonus**

α*	=	50°
S*	=	27.41
r1 max	=	1.14
r2	=	1.91

**Hülsenhals**

H1*	=	5.72
H2 <sup>1)</sup>	=	5.72

**Hülsenhals**

H1*	=	5.75
H2 <sup>1)</sup>	=	5.74

**Geschoß**

G1 <sup>1)</sup>	=	5.21
G2	=	
F	=	
L3+G <sup>1)</sup>	=	29.23

**Geschoßübergang**

G1*	=	5.23
G	=	3.32
α1*	=	90°
h	=	0.26
s	=	
i*	=	1°30'
w	=	

**Drücke (Energien)****Crusher-Methode**

Pmax	=	2550 bar
PK	=	2933 bar
PE	=	3315 bar
M	=	27.71

**Lauf**

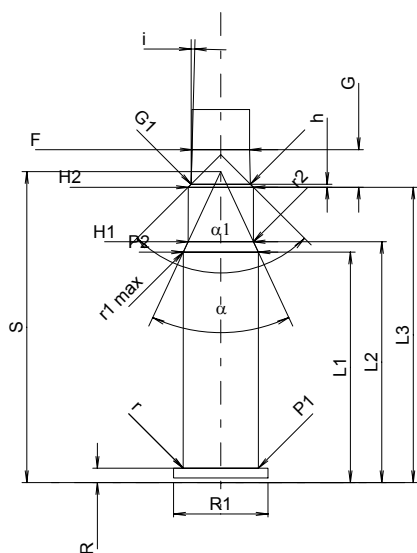
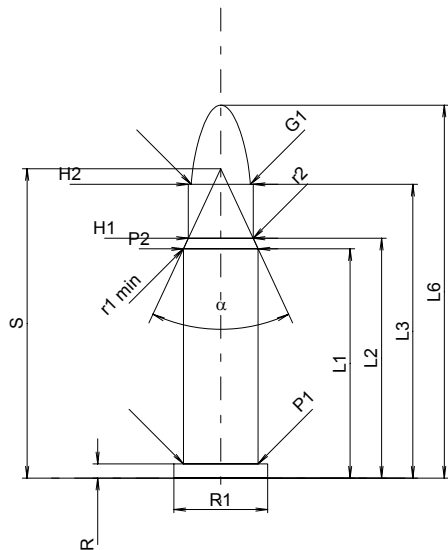
F <sup>1)</sup> *	=	5.07
Z <sup>1)</sup>	=	5.19

**Züge**

b	=	2.08
N	=	6
u	=	305.00
Q	=	20.96 mm <sup>2</sup>

**Verschiedene Daten**

Fe <sup>1)</sup>	=	0.10
delta L	=	



Maßstab 1.5:1

Maße in << mm >>  
Maße und Toleranzen für Messläufe  
siehe Anhang CR 2.

Bemerkungen: 1) Kontrolle aus Sicherheitsgründen  
\* Grundmaße