

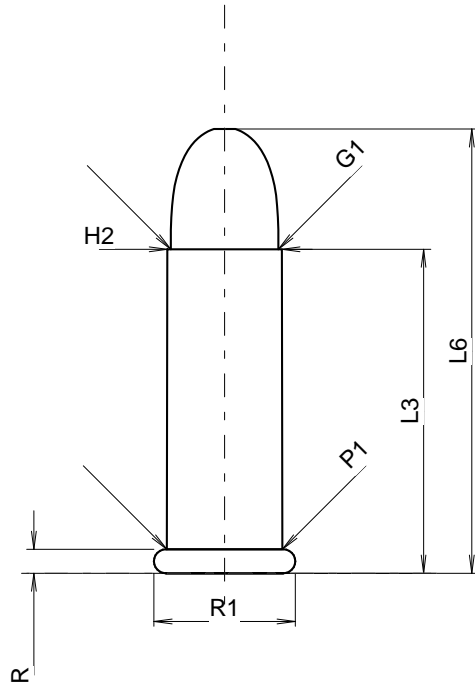
C.I.P.**22 Rem. Auto**

TAB. V

Date 84-06-14

Pays d'origine: US

Révision 00-06-07

**CARTOUCHE MAXI****Longueurs**

L1	=	
L2	=	
L3 ¹⁾	=	17.47
L4	=	
L5	=	
L6	=	23.95

Culot

R ¹⁾	=	1.29	-0.18
R1	=	7.62	
R3	=		
E	=		
E1	=		
e min	=		
δ	=		
f	=		
β	=		

Chambre à poudre

P1	=	6.23
P2	=	

Cône de raccordement

α	=	
S	=	
r1 min	=	
r2	=	

Collet

H1	=	
H2 ¹⁾	=	6.18

Projectile

G1 ¹⁾	=	5.80
G2	=	
F	=	
L3+G ¹⁾	=	18.41

Pressions (Énergies)**Méthode crusher**

Pmax	=	1600 bar
PK	=	1840 bar
PE	=	2080 bar
M	=	19.27

Autres indications

Fe ¹⁾	=	0.20
delta L	=	

CHAMBRE MINI**Longueurs**

L1	=	
L2	=	
L3 ¹⁾	=	17.86

Cuvette

R ¹⁾	=	1.29
R1	=	7.80
R2	=	
R3	=	
r	=	0.13

Chambre à poudre

E	=	
P1 ¹⁾	=	6.31
P2	=	

Cône de raccordement

α	=	
S	=	
r1 max	=	
r2	=	

Collet

H1	=	
H2 ¹⁾	=	6.20

Prise de rayures

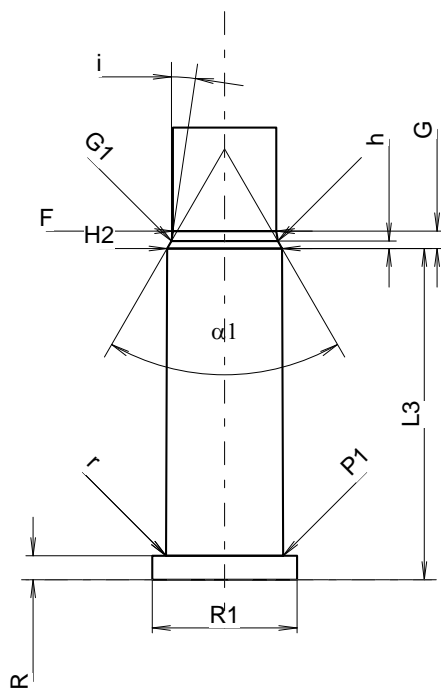
G1 *	=	5.74
G	=	0.94
α1 *	=	60°
h	=	0.40
s	=	
i *	=	8°27'29"
w	=	

Canon

F ¹⁾ *	=	5.58
Z ¹⁾	=	5.74

Rayures

b	=	
N	=	
u	=	
Q	=	mm ²



Échelle 2.45:1

Dimensions en << mm >>
Dimensions et tolérances pour les canons
d'épreuve: Voyez Annexe CR 2.

Notes: 1) A' contrôler pour la sécurité
* Dimensions de base