

C.I.P.

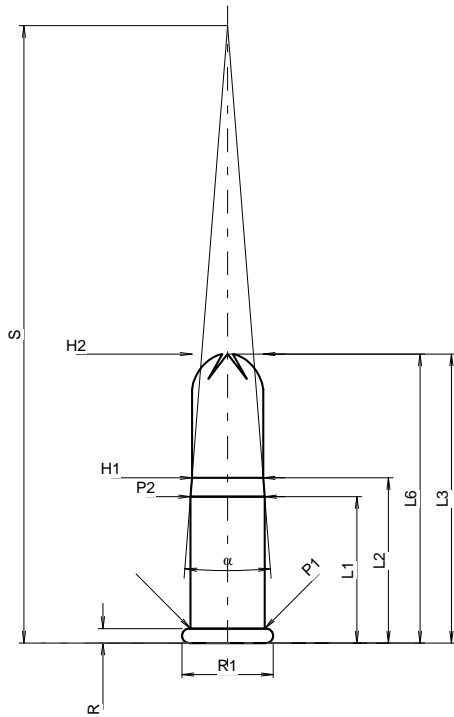
22 Long Shot

Country of Origin: US

TAB. V

Date 84-06-14

Revision 00-06-07



CARTRIDGE MAXI

Lengths

L1	=	11.34
L2	=	12.79
L3	=	22.38
L4	=	
L5	=	
L6	=	22.38

Case Head

R ¹⁾	=	1.12	-0.18
R1	=	7.06	
R3	=		
E	=		
E1	=		
e min	=		
δ	=		
f	=		
β	=		

Powder Chamber

P1	=	5.74
P2 *	=	5.74

Junction Cone

α *	=	9°
S *	=	47.81
r1 min	=	
r2	=	

Collar

H1 *	=	5.51
H2 ¹⁾	=	5.51

Projectile

G1	=	
G2	=	
F	=	
L1+G	=	

Pressures (Energies)

Method Crusher

Pmax	=	1400 bar
PK	=	1610 bar
PE	=	1820 bar
M	=	24.18

Miscellaneous Dimensions

Fe ¹⁾	=	0.20
delta L	=	

CHAMBER MINI

Lengths

L1	=	
L2	=	
L3 ¹⁾	=	20.45

Breech

R ¹⁾	=	1.12
R1	=	7.32
R2	=	
R3	=	
r	=	0.13

Powder Chamber

E	=	
P1 ¹⁾	=	5.78
P2	=	

Junction Cone

α	=	
S	=	
r1 max	=	
r2	=	

Collar

H1	=	
H2 ¹⁾	=	5.68

Commencement of Rifling

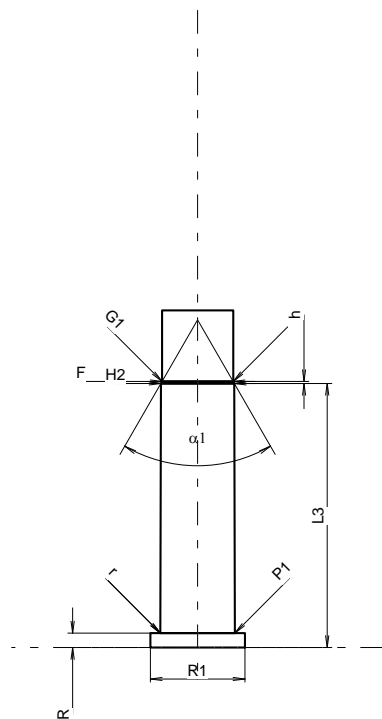
G1 *	=	5.51
G	=	
α1 *	=	60°
h	=	0.15
s	=	
i	=	
w	=	

Barrel

F ¹⁾ *	=	5.51
Z ¹⁾	=	5.51

Grooves

b	=	
N	=	
u	=	
Q	=	23.81 mm ²



Scale 1.71:1

Dimensions in << mm >>
Dimensions and Tolerances for Proof Barrels
see Appendix CR 2.

Notes: 1) Check for safety reasons
* Basic dimensions