

# C.I.P.

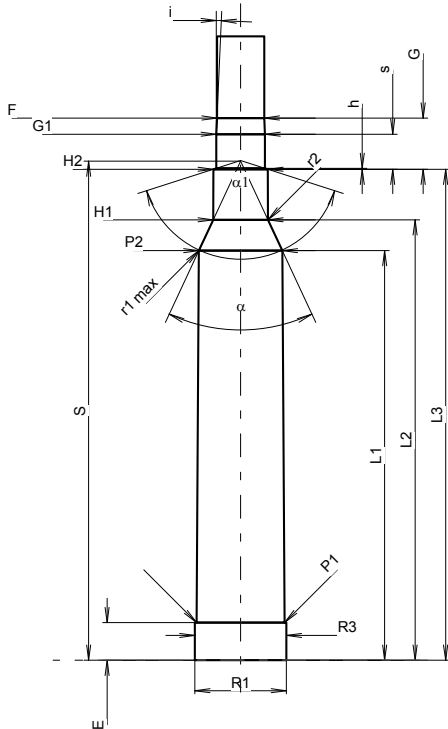
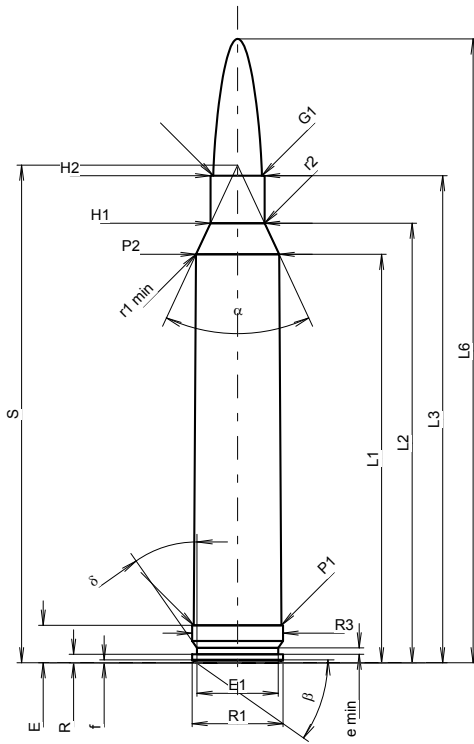
## 7 mm STW

Country of Origin: US

TAB. III

Date 00-02-15

Revision 08-09-23



Scale 1:1.12

Dimensions in << mm >>  
Dimensions and Tolerances for Proof Barrels  
see Appendix CR 1.

### CARTRIDGE MAXI

#### Lengths

L1	=	60.69
L2	=	65.32
L3 1)	=	72.39
L4	=	
L5	=	
L6	=	92.71

#### Case Head

R	=	1.27
R1	=	13.51
R3	=	13.51
E 1)	=	5.58
E1	=	12.07
e min	=	0.94
delta	=	35°
f	=	0.41
beta	=	35°

#### Powder Chamber

P1	=	13.03
P2 *	=	12.37

#### Junction Cone

alpha *	=	50°
S *	=	73.95
r1 min	=	1.02
r2	=	3.18

#### Collar

H1 *	=	8.05
H2 1)	=	8.05

#### Projectile

G1 1)	=	7.23
G2	=	
F	=	
L3+G 1)	=	80.01

#### Pressures (Energies)

##### Method Transducer

Pmax	=	4400 bar
PK	=	5060 bar
PE	=	5500 bar
M	=	25.00
EE	=	5250 Joule

#### Miscellaneous Dimensions

Fe 1)5)	=	0.10
delta L	=	

### CHAMBER MINI

#### Lengths

L1	=	60.88
L2	=	65.45
L3 1)	=	72.96

#### Breech

R	=	
R1	=	13.59
R2	=	
R3	=	13.59
r	=	

#### Powder Chamber

E 1)	=	5.59
P1 1)	=	13.06
P2 *	=	12.39

#### Junction Cone

alpha *	=	50°
S *	=	74.17
r1 max	=	0.76
r2	=	3.81

#### Collar

H1 *	=	8.13
H2 1)	=	8.10

#### Commencement of Rifling

G1 1)*	=	7.23
G 1)	=	7.62
alpha 1 *	=	144°19'10"
h	=	0.14
s	=	5.22
i 1)*	=	2°30'
w	=	

#### Barrel

F 1)*	=	7.02
Z 1)	=	7.21

#### Grooves

b	=	2.87
N	=	6
u	=	241.00
Q	=	40.39 mm <sup>2</sup>

Notes: 1) Check for safety reasons  
5) Headspace on Belt  
\* Basic dimensions