

# C.I.P.

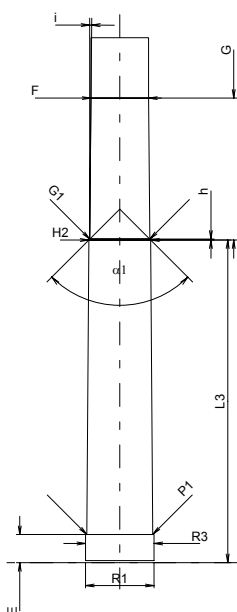
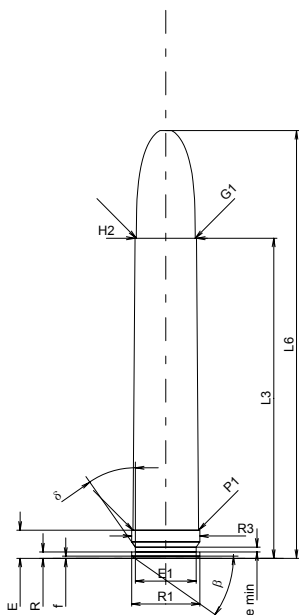
## 458 Win. Mag.

Country of Origin: US

TAB. III

Date 84-06-14

Revision 02-05-15



Scale 1:1.5

Dimensions in << mm >>  
Dimensions and Tolerances for Proof Barrels  
see Appendix CR 1.

### CARTRIDGE MAXI

#### Lengths

L1	=	
L2	=	
L3 <sup>1)</sup>	=	63.50
L4	=	
L5	=	
L6	=	84.84

#### Case Head

R	=	1.27	
R1	=	13.51	
R3	=	13.51	
E <sup>1)</sup>	=	5.59	-0.20
E1	=	12.07	
e min	=	0.94	
delta	=	35°	
f	=	0.41	
beta	=	35°	

#### Powder Chamber

P1	=	13.03
P2	=	

#### Junction Cone

alpha	=	
S	=	
r1 min	=	
r2	=	

#### Collar

H1	=	
H2 <sup>1)</sup>	=	12.22

#### Projectile

G1 <sup>1)</sup>	=	11.66
G2	=	
F	=	
L3+G <sup>1)</sup>	=	91.65

#### Pressures (Energies)

##### Method Transducer

Pmax	=	4300 bar
PK	=	4945 bar
PE	=	5375 bar
M	=	25.00
EE	=	6615 Joule

#### Miscellaneous Dimensions

Fe <sup>1)</sup>	=	0.10
delta L	=	

### CHAMBER MINI

#### Lengths

L1	=	
L2	=	
L3 <sup>1)</sup>	=	64.01

#### Breech

R	=	
R1	=	13.59
R2	=	
R3	=	13.59
r	=	

#### Powder Chamber

E <sup>1)</sup>	=	5.59
P1 <sup>1)</sup>	=	13.08
P2	=	

#### Junction Cone

alpha	=	
S	=	
r1 max	=	
r2	=	

#### Collar

H1	=	
H2 <sup>1)</sup>	=	12.27

#### Commencement of Rifling

G1 <sup>1)</sup> *	=	11.91
G <sup>1)</sup>	=	28.15
alpha1 *	=	90°
h	=	0.18
s	=	
i <sup>1)</sup> *	=	0°29'30"
w	=	

#### Barrel

F <sup>1)</sup> *	=	11.43
Z <sup>1)</sup>	=	11.63

#### Grooves

b	=	3.81
N	=	6
u	=	356.00
Q	=	104.94 mm <sup>2</sup>

Notes: 1) Check for safety reasons  
\* Basic dimensions