

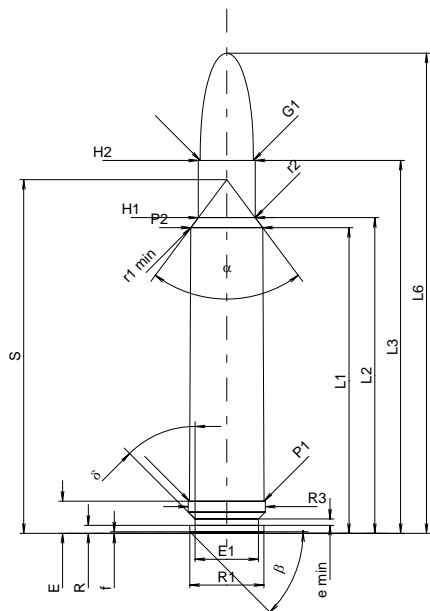
C.I.P.**416 Weath. Mag.**

TAB. III

Date 91-02-19

Revision 04-05-18

Country of Origin: US

**CARTRIDGE MAXI****Lengths**

L1	=	60.66
L2	=	62.64
L3 ¹⁾	=	73.99
L4	=	
L5	=	
L6	=	95.25

Case Head

R	=	1.60
R1	=	14.71
R3	=	15.33
E ¹⁾	=	6.40
E1	=	12.57
e min	=	1.24
delta	=	45°
f	=	0.30
beta	=	45°

Powder Chamber

P1	=	14.78
P2 *	=	14.24

Junction Cone

alpha *	=	73°32'42"
S *	=	70.19
r1 min	=	3.30
r2	=	4.17

Collar

H1 *	=	11.28
H2 ¹⁾	=	11.28

Projectile

G1 ¹⁾	=	10.57
G2	=	
F	=	
L3+G ¹⁾	=	84.26

Pressures (Energies)**Method Transducer**

Pmax	=	4400 bar
PK	=	5060 bar
PE	=	5500 bar
M	=	25.00
EE	=	9030 Joule

Miscellaneous Dimensions

Fe ¹⁾	=	0.10
delta L	=	

CHAMBER MINI**Lengths**

L1	=	60.79
L2	=	62.77
L3 ¹⁾	=	74.65

Breech

R	=	
R1	=	15.39
R2	=	
R3	=	15.39
r	=	

Powder Chamber

E ¹⁾	=	6.43
P1 ¹⁾	=	14.83
P2 *	=	14.32

Junction Cone

alpha *	=	72°34'30"
S *	=	70.54
r1 max	=	3.05
r2	=	4.42

Collar

H1 *	=	11.41
H2 ¹⁾	=	11.38

Commencement of Rifling

G1 ¹⁾ *	=	10.58
G ¹⁾	=	10.27
alpha 1 *	=	93°
h	=	0.38
s	=	6.07
i ¹⁾ *	=	1°30'
w	=	

Barrel

F ¹⁾ *	=	10.36
Z ¹⁾	=	10.57

Grooves

b	=	3.23
N	=	6
u	=	356.00
Q	=	86.37 mm ²

Scale 1:1.5

Dimensions in << mm >>
Dimensions and Tolerances for Proof Barrels
see Appendix CR 1.

Notes: 1) Check for safety reasons
* Basic dimensions