

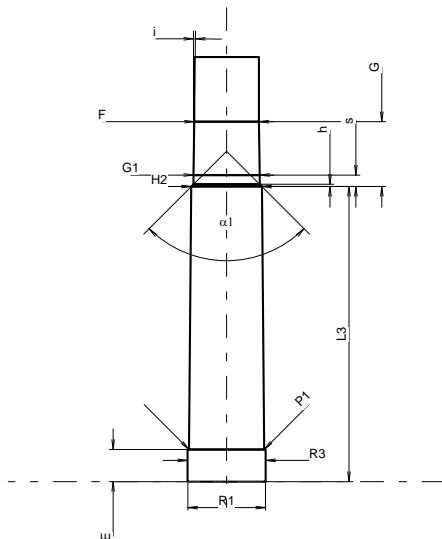
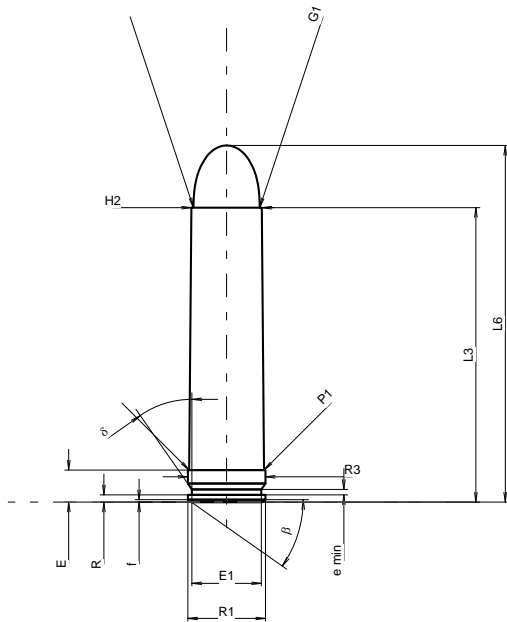
C.I.P.**11,5 x 51**

TAB. III

Datum 09-05-05

Ursprungsland: DE

Revision



Maßstab 1:1.31

Maße in << mm >>
Maße und Toleranzen für Messläufe
siehe Anhang CR 1.

PATRONE MAXI**Längen**

L1	=	
L2	=	
L3 ¹⁾	=	51.20
L4	=	
L5	=	
L6	=	62.00

Hülsenboden

R	=	1.27
R1	=	13.51
R3	=	13.51
E ¹⁾	=	5.59 -0.20
E1	=	12.07
e min	=	0.94
δ	=	35°
f	=	0.41
β	=	35°

Pulverkammer

P1	=	13.03
P2	=	

Schulterkonus

α	=	
S	=	
r1 min	=	
r2	=	

Hülsenhals

H1	=	
H2 ¹⁾	=	12.25

Geschoss

G1 ¹⁾	=	11.49
G2	=	
F	=	
L3+G ¹⁾	=	62.48

Drücke (Energien)**Mech. elektr. Wandler**

Pmax	=	4000 bar
PK	=	4600 bar
PE	=	5000 bar
M	=	25.00
EE	=	5800 Joule

Verschiedene Daten

Fe ¹⁾⁵⁾	=	0.10
delta L	=	

PATRONENLAGER MINI**Längen**

L1	=	
L2	=	
L3	=	51.30

Stoßboden

R	=	
R1	=	13.51
R2	=	
R3	=	13.59
r	=	

Pulverkammer

E ¹⁾	=	5.59
P1 ¹⁾	=	13.06
P2	=	

Schulterkonus

α	=	
S	=	
r1 max	=	
r2	=	

Hülsenhals

H1	=	
H2 ¹⁾	=	12.28

Geschossübergang

G1 ¹⁾ *	=	11.49
G ¹⁾	=	11.28
α1	=	90°
h	=	0.40
s *	=	2.00
i ¹⁾ *	=	0°48'09"
w	=	

Lauf

F ¹⁾ *	=	11.23
Z ¹⁾	=	11.43

Züge

b	=	4.06
N	=	6
u	=	508.00
Q	=	101.54 mm ²

Bemerkungen: 1) Kontrolle aus Sicherheitsgründen
5) Verschlussabstand an Gürtel
* Grundmaße