

C.I.P.**375 Win.**

TAB.

II

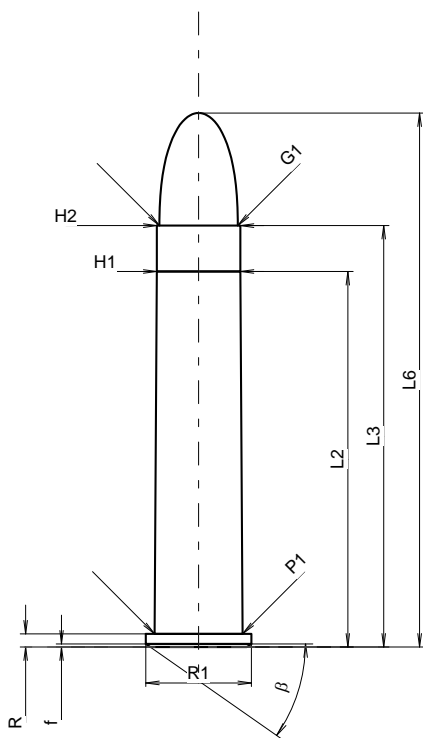
Date

84-06-14

Révision

10-05-26

Pays d'origine: US

**CARTOUCHE MAXI****Longueurs**

L1	=	
L2	=	45.72
L3 ¹⁾	=	51.31
L4	=	
L5	=	
L6	=	65.02

Culot

R ¹⁾	=	1.60	-0.25
R1	=	12.85	
R3	=		
E	=		
E1	=		
e min	=		
δ	=		
f	=	0.38	
β	=	35°	

Chambre à poudre

P1	=	10.71
P2	=	

Cône de raccordement

α	=	
S	=	
r1 min	=	
r2	=	

Collet

H1 *	=	10.16
H2 ¹⁾	=	10.16

Projectile

G1 ¹⁾	=	9.55
G2	=	
F	=	
L3+G ¹⁾	=	58.62

Pressions (Énergies)**Méthode transducteur**

Pmax	=	3800 bar
PK	=	4370 bar
PE	=	4750 bar
M	=	25.00
EE	=	2930 Joule

Autres indications

Fe ¹⁾⁴⁾	=	0.15
delta L	=	

CHAMBRE MINI**Longueurs**

L1	=	
L2	=	45.72
L3 ¹⁾	=	52.83

Cuvette

R ¹⁾	=	1.60
R1	=	13.11
R2	=	
R3	=	
r	=	

Chambre à poudre

E	=	
P1 ¹⁾	=	10.74
P2	=	

Cône de raccordement

α	=	
S	=	
r1 max	=	
r2	=	

Collet

H1 *	=	10.20
H2 ¹⁾	=	10.20

Prise de rayures

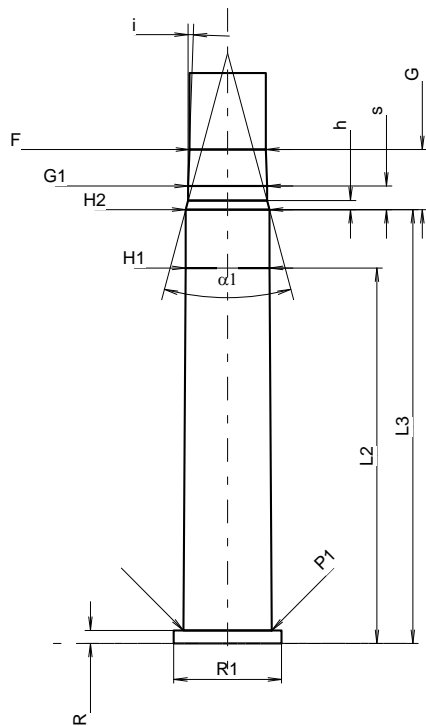
G1 ¹⁾ *	=	9.61
G ¹⁾	=	7.31
α1 *	=	30°
h	=	1.10
s	=	2.87
i ¹⁾ *	=	2°
w	=	

Canon

F ¹⁾ *	=	9.30
Z ¹⁾	=	9.55

Rayures

b	=	2.92
N	=	6
u	=	305.00
Q	=	70.16 mm ²



Échelle 1.09:1

Dimensions en << mm >>
Dimensions et tolérances pour les canons
d'épreuve: Voyez Annexe CR 1.

Notes: 1) A' contrôler pour la sécurité
4) Feuillure sur la bourrelet
* Dimensions de base