

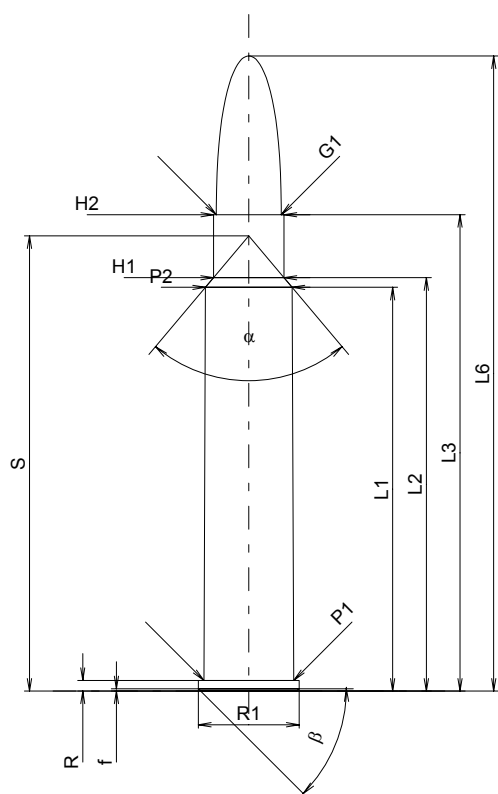
C.I.P.**8,5 x 63 R**

TAB. II

Date 92-02-27

Pays d'origine: DE

Révision 02-05-15

**CARTOUCHE MAXI****Longueurs**

L1 [*]	=	53.39
L2 [*]	=	54.66
L3 ¹⁾	=	63.00
L4	=	
L5	=	
L6	=	84.00

Colot

R ¹⁾	=	1.40	-0.25
R1	=	13.32	
R3	=		
E	=		
E1	=		
e min	=		
delta	=		
f	=	0.30	
beta	=	45°	

Chambre à poudre

P1	=	11.89
P2 [*]	=	11.47

Cône de raccordement

alpha	=	80°13'45"
S	=	60.20
r1 min	=	
r2	=	

Collet

H1 [*]	=	9.33
H2 ¹⁾	=	9.32

Projectile

G1 ¹⁾	=	8.59
G2	=	
F	=	
L3+G ¹⁾	=	72.00

Pressions (Énergies)**Méthode transducteur**

Pmax	=	3800 bar
PK	=	4370 bar
PE	=	4750 bar
M	=	25.00
EE	=	5145 Joule

Autres indications

Fe ¹⁾	=	0.15
delta L	=	

CHAMBRE MINI**Longueurs**

L1 [*]	=	53.40
L2 [*]	=	54.67
L3 ¹⁾	=	63.55

Cuvette

R ¹⁾	=	1.40
R1	=	13.37
R2	=	
R3	=	
r	=	

Chambre à poudre

E	=	
P1 ¹⁾	=	11.92
P2 [*]	=	11.50

Cône de raccordement

alpha	=	80°13'44"
S	=	60.22
r1 max	=	
r2	=	

Collet

H1 [*]	=	9.36
H2 ¹⁾	=	9.35

Prise de rayures

G1 ¹⁾ *	=	8.59
G ¹⁾ *	=	9.00
alpha1	=	180°
h	=	
s [*]	=	5.83
i ¹⁾	=	1°53'48"
w	=	

Canon

F ¹⁾ *	=	8.38
Z ¹⁾	=	8.59

Rayures

b	=	2.79
N	=	6
u	=	254.00
Q	=	56.95 mm ²

Échelle 1:1

Dimensions en << mm >>
Dimensions et tolérances pour les canons
d'épreuve: Voyez Annexe CR 1.

Notes: 1) A' contrôler pour la sécurité
* Dimensions de base