

C.I.P.**45-70 Govt.**

TAB.

II

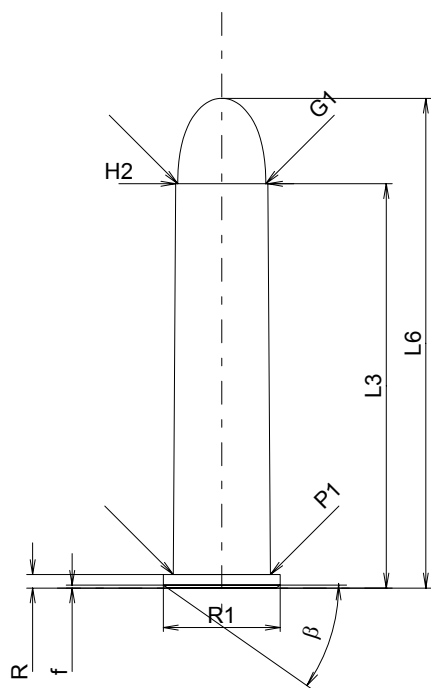
Date

84-06-14

Pays d'origine: US

Révision

02-05-15

**CARTOUCHE MAXI****Longueurs**

L1	=	
L2	=	
L3 ¹⁾	=	53.47
L4	=	
L5	=	
L6	=	64.77

Culot

R ¹⁾	=	1.78	-0.25
R1	=	15.44	
R3	=		
E	=		
E1	=		
e min	=		
δ	=		
f	=	0.38	
β	=	35°	

Chambre à poudre

P1	=	12.84
P2	=	

Cône de raccordement

α	=	
S	=	
r1 min	=	
r2	=	

Collet

H1	=	
H2 ¹⁾	=	12.19

Projectile

G1 ¹⁾	=	11.63
G2	=	
F	=	
L3+G ¹⁾	=	55.22

Pressions (Énergies)**Méthode transducteur**

Pmax	=	2200 bar
PK	=	2530 bar
PE	=	2750 bar
M	=	25.00
EE	=	3414 Joule

Autres indications

Fe ¹⁾	=	0.15
delta L	=	

CHAMBRE MINI**Longueurs**

L1	=	
L2	=	
L3 ¹⁾	=	53.59

Cuvette

R ¹⁾	=	1.78
R1	=	15.70
R2	=	
R3	=	
r	=	

Chambre à poudre

E	=	
P1 ¹⁾	=	12.91
P2	=	

Cône de raccordement

α	=	
S	=	
r1 max	=	
r2	=	

Collet

H1	=	
H2 ¹⁾	=	12.22

Prise de rayures

G1 ^{1)*}	=	12.22
G ¹⁾	=	1.75
α1	=	
h	=	
s	=	
i ^{1)*}	=	12°45'
w	=	

Canon

F ^{1)*}	=	11.43
Z ¹⁾	=	11.58

Rayures

b	=	3.58
N	=	6
u	=	508.00
Q	=	104.25 mm ²

Échelle 1:1

Dimensions en << mm >>
Dimensions et tolérances pour les canons
d'épreuve: Voyez Annexe CR 1.

Notes: 1) A' contrôler pour la sécurité
* Dimensions de base