

C.I.P.

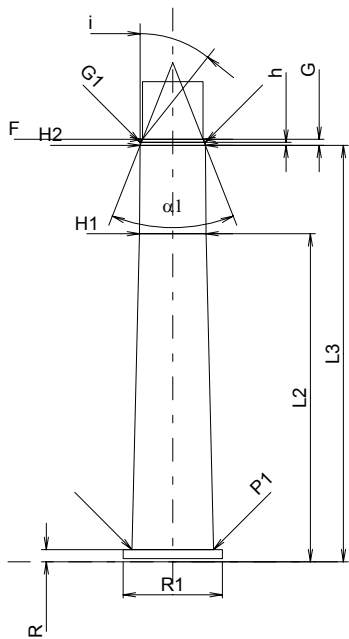
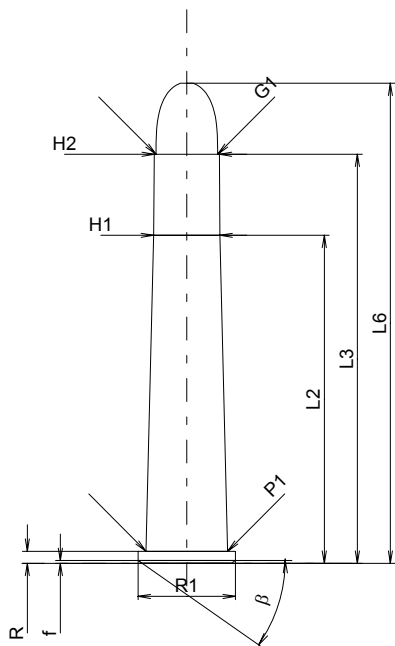
32-40 Win.

Country of Origin: US

TAB. II

Date 84-06-14

Revision 02-05-15



Scale 1:1

Dimensions in << mm >>
Dimensions and Tolerances for Proof Barrels
see Appendix CR 1.

CARTRIDGE MAXI

Lengths

L1	=	
L2	=	43.38
L3 ¹⁾	=	54.10
L4	=	
L5	=	
L6	=	63.50

Case Head

R ¹⁾	=	1.60	-0.25
R1	=	12.85	
R3	=		
E	=		
E1	=		
e min	=		
delta	=		
f	=	0.38	
beta	=	35°	

Powder Chamber

P1	=	10.77
P2	=	

Junction Cone

alpha	=	
S	=	
r1 min	=	
r2	=	

Collar

H1*	=	8.78
H2 ¹⁾	=	8.61

Projectile

G1 ¹⁾	=	8.15
G2	=	
F	=	
L3+G ¹⁾	=	54.89

Pressures (Energies)

Method Transducer

Pmax	=	2350 bar
PK	=	2703 bar
PE	=	2940 bar
M	=	25.00
EE	=	1105 Joule

Miscellaneous Dimensions

Fe ¹⁾	=	0.15
delta L	=	

CHAMBER MINI

Lengths

L1	=	
L2	=	43.38
L3 ¹⁾	=	55.07

Breech

R ¹⁾	=	1.60
R1	=	13.11
R2	=	
R3	=	
r	=	

Powder Chamber

E	=	
P1 ¹⁾	=	10.79
P2	=	

Junction Cone

alpha	=	
S	=	
r1 max	=	
r2	=	

Collar

H1*	=	8.81
H2 ¹⁾	=	8.62

Commencement of Rifling

G1 ^{1)*}	=	8.62
G ¹⁾	=	0.79
alpha1*	=	43°
h	=	0.40
s	=	
i ^{1)*}	=	21°30'
w	=	

Barrel

F ^{1)*}	=	8.00
Z ¹⁾	=	8.13

Grooves

b	=	2.51
N	=	6
u	=	406.00
Q	=	51.26 mm ²

Notes: 1) Check for safety reasons
* Basic dimensions