

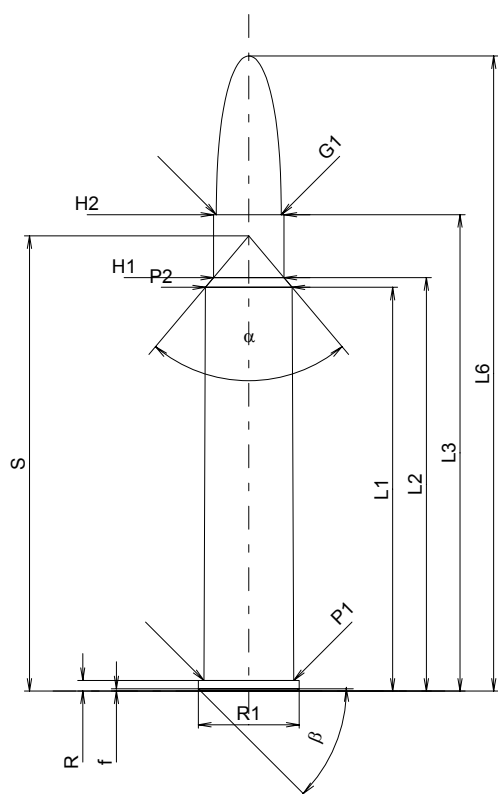
C.I.P.**8,5 x 63 R**

TAB. II

Date 92-02-27

Revision 02-05-15

Country of Origin: DE

**CARTRIDGE MAXI****Lengths**

L1 [*]	=	53.39
L2 [*]	=	54.66
L3 ¹⁾	=	63.00
L4	=	
L5	=	
L6	=	84.00

Case Head

R ¹⁾	=	1.40	-0.25
R1	=	13.32	
R3	=		
E	=		
E1	=		
e min	=		
delta	=		
f	=	0.30	
beta	=	45°	

Powder Chamber

P1	=	11.89
P2 [*]	=	11.47

Junction Cone

alpha	=	80°13'45"
S	=	60.20
r1 min	=	
r2	=	

Collar

H1 [*]	=	9.33
H2 ¹⁾	=	9.32

Projectile

G1 ¹⁾	=	8.59
G2	=	
F	=	
L3+G ¹⁾	=	72.00

Pressures (Energies)**Method Transducer**

Pmax	=	3800 bar
PK	=	4370 bar
PE	=	4750 bar
M	=	25.00
EE	=	5145 Joule

Miscellaneous Dimensions

Fe ¹⁾	=	0.15
delta L	=	

CHAMBER MINI**Lengths**

L1 [*]	=	53.40
L2 [*]	=	54.67
L3 ¹⁾	=	63.55

Breech

R ¹⁾	=	1.40
R1	=	13.37
R2	=	
R3	=	
r	=	

Powder Chamber

E	=	
P1 ¹⁾	=	11.92
P2 [*]	=	11.50

Junction Cone

alpha	=	80°13'44"
S	=	60.22
r1 max	=	
r2	=	

Collar

H1 [*]	=	9.36
H2 ¹⁾	=	9.35

Commencement of Rifling

G1 ¹⁾ *	=	8.59
G ¹⁾ *	=	9.00
alpha1	=	180°
h	=	
s [*]	=	5.83
i ¹⁾	=	1°53'48"
w	=	

Barrel

F ¹⁾ *	=	8.38
Z ¹⁾	=	8.59

Grooves

b	=	2.79
N	=	6
u	=	254.00
Q	=	56.95 mm ²

Scale 1:1

Dimensions in << mm >>
Dimensions and Tolerances for Proof Barrels
see Appendix CR 1.

Notes: 1) Check for safety reasons
* Basic dimensions