

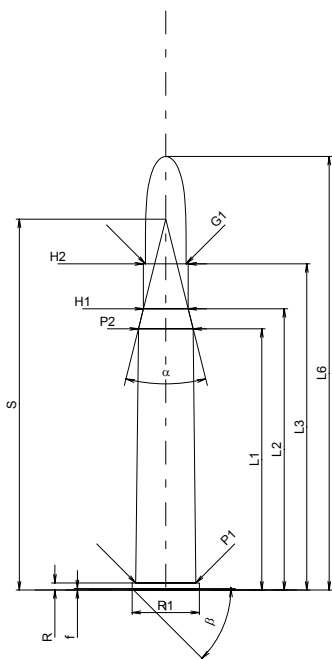
**C.I.P.****8 x 65 R**

TAB. II

Date 84-06-14

Revision 02-05-15

Country of Origin: DE

**CARTRIDGE MAXI****Lengths**

L1 <sup>*</sup>	=	51.80
L2 <sup>*</sup>	=	55.79
L3 <sup>1)</sup>	=	64.70
L4	=	
L5	=	
L6	=	86.00

**Case Head**

R <sup>1)</sup>	=	1.40	-0.25
R1	=	13.32	
R3	=		
E	=		
E1	=		
e min	=		
delta	=		
f	=	0.30	
beta	=	45°	

**Powder Chamber**

P1	=	11.95
P2 <sup>*</sup>	=	10.85

**Junction Cone**

alpha	=	28°00'18"
S	=	73.55
r1 min	=	
r2	=	

**Collar**

H1 <sup>*</sup>	=	8.86
H2 <sup>1)</sup>	=	8.86

**Projectile**

G1 <sup>1)</sup>	=	8.09
G2	=	
F	=	
L3+G <sup>1)</sup>	=	98.70

**Pressures (Energies)****Method Transducer**

Pmax	=	3900 bar
PK	=	4485 bar
PE	=	4875 bar
M	=	25.00
EE	=	4410 Joule

**Miscellaneous Dimensions**

Fe <sup>1)</sup>	=	0.10
delta L	=	

**CHAMBER MINI****Lengths**

L1 <sup>*</sup>	=	51.80
L2 <sup>*</sup>	=	55.79
L3 <sup>1)</sup>	=	65.00

**Breech**

R <sup>1)</sup>	=	1.40
R1	=	13.37
R2	=	
R3	=	
r	=	

**Powder Chamber**

E	=	
P1 <sup>1)</sup>	=	11.98
P2 <sup>*</sup>	=	10.88

**Junction Cone**

alpha	=	28°00'18"
S	=	73.61
r1 max	=	
r2	=	

**Collar**

H1 <sup>*</sup>	=	8.89
H2 <sup>1)</sup>	=	8.88

**Commencement of Rifling**

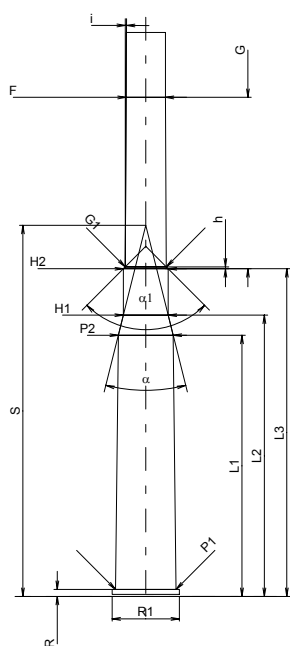
G1 <sup>1)</sup> *	=	8.14
G <sup>1)</sup> *	=	34.00
alpha1	=	90°
h <sup>*</sup>	=	0.37
s	=	
i <sup>1)</sup>	=	0°17'22"
w	=	

**Barrel**

F <sup>1)</sup> *	=	7.80
Z <sup>1)</sup>	=	8.07

**Grooves**

b	=	4.40
N	=	4
u	=	240.00
Q	=	50.30 mm <sup>2</sup>



Scale 1:1.5

Dimensions in << mm >>  
Dimensions and Tolerances for Proof Barrels  
see Appendix CR 1.

Notes: 1) Check for safety reasons  
\* Basic dimensions