

# C.I.P.

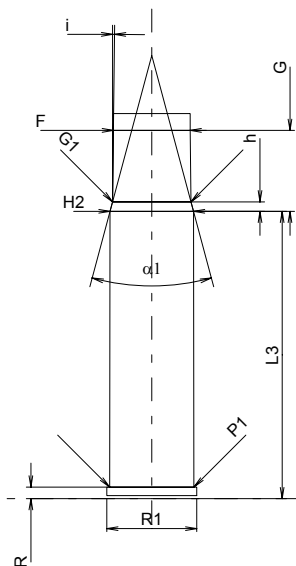
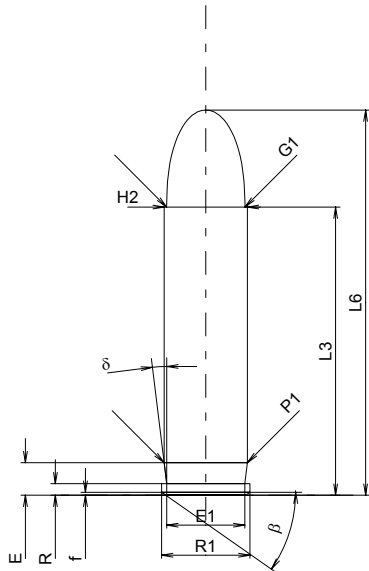
## 401 Win. SL

Country of Origin: US

TAB. II

Date 84-06-14

Revision 02-05-15



### CARTRIDGE MAXI

#### Lengths

L1	=	
L2	=	
L3 <sup>1)</sup>	=	38.10
L4	=	
L5	=	
L6	=	50.93

#### Case Head

R <sup>1)</sup>	=	1.52	-0.25
R1	=	11.68	
R3	=		
E	=	4.30	
E1	=	10.31	
e min	=		
delta	=	7°	
f	=	0.38	
beta	=	35°	

#### Powder Chamber

P1	=	11.00
P2	=	

#### Junction Cone

alpha	=	
S	=	
r1 min	=	
r2	=	

#### Collar

H1	=	
H2 <sup>1)</sup>	=	10.99

#### Projectile

G1 <sup>1)</sup>	=	10.34
G2	=	
F	=	
L3+G <sup>1)</sup>	=	48.80

#### Pressures (Energies)

##### Method Transducer

Pmax	=	2450 bar
PK	=	2818 bar
PE	=	3060 bar
M	=	25.00
EE	=	2655 Joule

#### Miscellaneous Dimensions

Fe <sup>1)</sup>	=	0.15
delta L	=	

### CHAMBER MINI

#### Lengths

L1	=	
L2	=	
L3 <sup>1)</sup>	=	38.00

#### Breech

R <sup>1)</sup>	=	1.52
R1	=	11.91
R2	=	
R3	=	
r	=	

#### Powder Chamber

E	=	
P1 <sup>1)</sup>	=	11.13
P2	=	

#### Junction Cone

alpha	=	
S	=	
r1 max	=	
r2	=	

#### Collar

H1	=	
H2 <sup>1)</sup>	=	11.05

#### Commencement of Rifling

G1 <sup>1)*</sup>	=	10.38
G <sup>1)</sup>	=	10.70
alpha1 <sup>*</sup>	=	30°
h	=	1.25
s	=	
i <sup>1)*</sup>	=	0°40'
w	=	

#### Barrel

F <sup>1)*</sup>	=	10.16
Z <sup>1)</sup>	=	10.33

#### Grooves

b	=	3.19
N	=	6
u	=	406.00
Q	=	82.73 mm <sup>2</sup>

Scale 1:1

Dimensions in << mm >>  
Dimensions and Tolerances for Proof Barrels  
see Appendix CR 1.

Notes: 1) Check for safety reasons  
\* Basic dimensions