

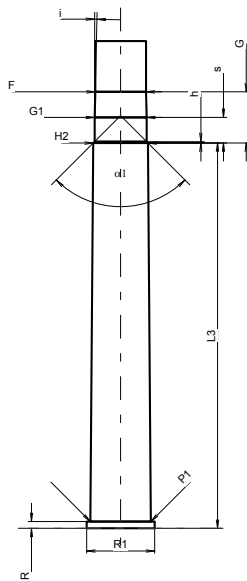
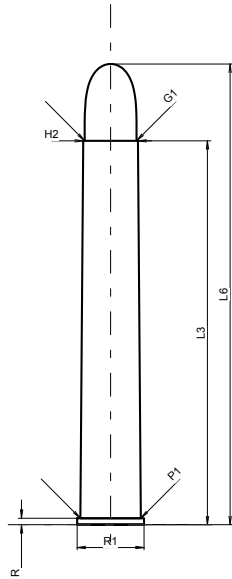
**C.I.P.****400 Purdey 3"**

Country of Origin: GB

TAB. II

Date 84-06-14

Revision 07-05-14



Scale 1:1.5

Dimensions in << mm >>  
 Dimensions and Tolerances for Proof Barrels  
 see Appendix .

**CARTRIDGE MAXI****Lengths**

L1	=	
L2	=	
L3 <sup>1)</sup>	=	76.20
L4	=	
L5	=	
L6	=	91.44

**Case Head**

R <sup>1)</sup>	=	1.32
R1	=	13.26
R3	=	
E	=	
E1	=	
e min	=	
δ	=	
f	=	
β	=	

**Powder Chamber**

P1	=	11.99
P2	=	

**Junction Cone**

α	=	
S	=	
r1 min	=	
r2	=	

**Collar**

H1	=	
H2 <sup>1)</sup>	=	10.85

**Projectile**

G1 <sup>1)</sup>	=	10.29
G2	=	
F	=	
L3+G <sup>1)</sup>	=	86.36

**Pressures (Energies)****Method Transducer**

Pmax	=	2400 bar
PK	=	2760 bar
PE	=	3000 bar
M	=	25.00
EE	=	3300 Joule

**Miscellaneous Dimensions**

Fe <sup>1)4)</sup>	=	0.15
delta L	=	

**CHAMBER MINI****Lengths**

L1	=	
L2	=	
L3 <sup>1)</sup>	=	76.45

**Breech**

R <sup>1)</sup>	=	1.35
R1	=	13.51
R2	=	
R3	=	
r	=	

**Powder Chamber**

E	=	
P1 <sup>1)</sup>	=	12.01
P2	=	

**Junction Cone**

α	=	
S	=	
r1 max	=	
r2	=	

**Collar**

H1	=	
H2 <sup>1)</sup>	=	10.87

**Commencement of Rifling**

G1 <sup>1)</sup> *	=	10.33
G <sup>1)</sup>	=	10.16
α1 *	=	90°
h	=	0.27
s	=	5.08
i <sup>1)</sup> *	=	1°24'34"
w	=	

**Barrel**

F <sup>1)</sup> *	=	10.08
Z <sup>1)</sup>	=	10.33

**Grooves**

b	=	3.56
N	=	7
u	=	381.00
Q	=	82.98 mm <sup>2</sup>

Notes: 1) Check for safety reasons  
 4) Headspace on Rim  
 \* Basic dimensions