

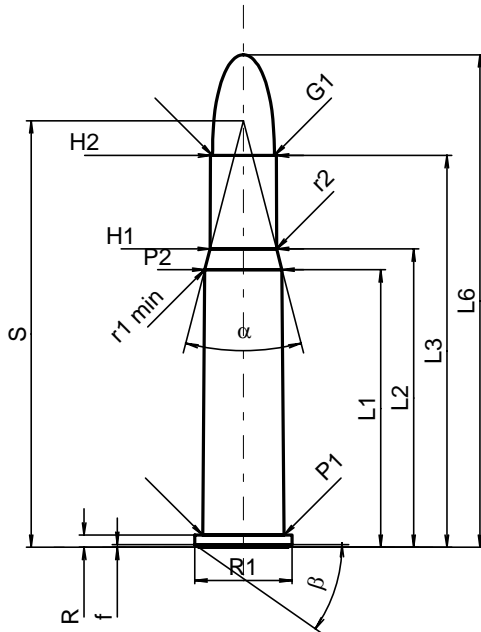
C.I.P.**32 Win. Spec.**

TAB. II

Datum 84-06-14

Revision 06-06-23

Ursprungsland: US

**PATRONE MAXI****Längen**

L1	=	36.72
L2	=	39.47
L3 ¹⁾	=	51.82
L4	=	
L5	=	
L6	=	65.15

Hülsenboden

R ¹⁾	=	1.60	-0.25
R1	=	12.85	
R3	=		
E	=		
E1	=		
e min	=		
δ	=		
f	=	0.38	
β	=	35°	

Pulverkammer

P1	=	10.72
P2*	=	10.20

Schulterkonus

α*	=	29°2'
S*	=	56.42
r1 min	=	3.81
r2	=	7.62

Hülsenhals

H1*	=	8.78
H2 ¹⁾	=	8.71

Geschoss

G1 ¹⁾	=	8.18
G2	=	
F	=	
L3+G ¹⁾	=	53.16

Drücke (Energien)**Mech. elektr. Wandler**

Pmax	=	3050 bar
PK	=	3508 bar
PE	=	3810 bar
M	=	25.00
EE	=	2370 Joule

Verschiedene Daten

Fe ¹⁾	=	0.15
delta L	=	

PATRONENLAGER MINI**Längen**

L1	=	36.82
L2	=	39.56
L3 ¹⁾	=	52.91

Stoßboden

R ¹⁾	=	1.60
R1	=	13.11
R2	=	
R3	=	
r	=	

Pulverkammer

E	=	
P1 ¹⁾	=	10.74
P2*	=	10.24

Schulterkonus

α*	=	29°28'
S*	=	56.29
r1 max	=	3.81
r2	=	7.62

Hülsenhals

H1*	=	8.80
H2 ¹⁾	=	8.72

Geschossübergang

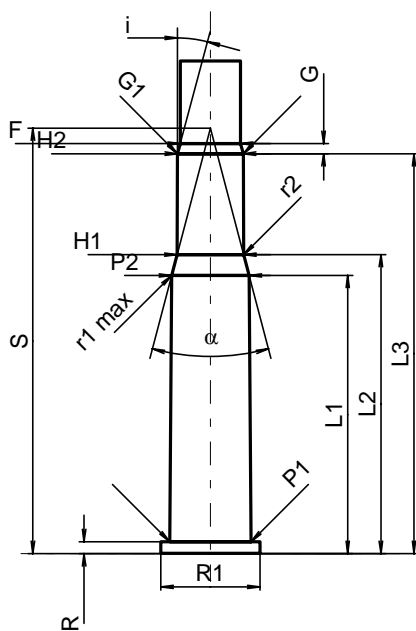
G1 ^{1)*}	=	8.72
G ¹⁾	=	1.34
α1*	=	
h	=	
s	=	
i ^{1)*}	=	15°
w	=	

Lauf

F ^{1)*}	=	8.00
Z ¹⁾	=	8.13

Züge

b	=	2.69
N	=	6
u	=	406.00
Q	=	51.33 mm ²



Maßstab 1:1

Maße in << mm >>
Maße und Toleranzen für Messläufe
siehe Anhang CR 1.

Bemerkungen: 1) Kontrolle aus Sicherheitsgründen
* Grundmaße