

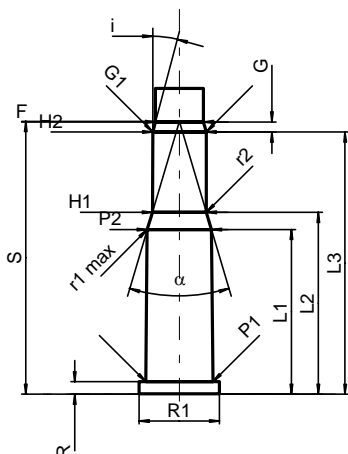
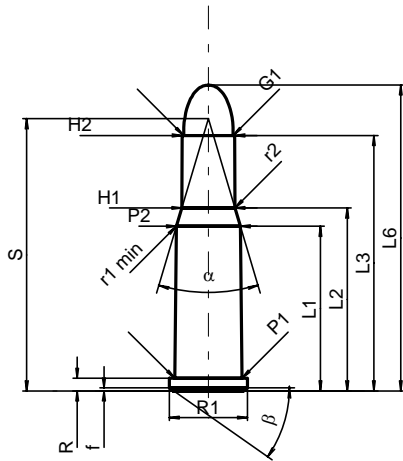
**C.I.P.****25-20 Win.**

TAB. II

Datum 84-06-14

Revision 02-05-15

Ursprungsland: US

**PATRONE MAXI****Längen**

L1	=	21.77
L2	=	24.19
L3 <sup>1)</sup>	=	33.78
L4	=	
L5	=	
L6	=	40.44

**Hülsenboden**

R <sup>1)</sup>	=	1.65	-0.25
R1	=	10.36	
R3	=		
E	=		
E1	=		
e min	=		
delta	=		
f	=	0.38	
beta	=	35°	

**Pulverkammer**

P1	=	8.87
P2*	=	8.46

**Schulterkonus**

alpha*	=	33°8'
S*	=	35.99
r1 min	=	2.54
r2	=	4.70

**Hülsenhals**

H1*	=	7.02
H2 <sup>1)</sup>	=	6.95

**Geschoss**

G1 <sup>1)</sup>	=	6.55
G2	=	
F	=	
L3+G <sup>1)</sup>	=	35.13

**Drücke (Energien)****Mech. elektr. Wandler**

Pmax	=	2700 bar
PK	=	3105 bar
PE	=	3375 bar
M	=	17.50
EE	=	1090 Joule

**Verschiedene Daten**

Fe <sup>1)</sup>	=	0.15
delta L	=	

**PATRONELAGER MINI****Längen**

L1	=	21.78
L2	=	24.05
L3 <sup>1)</sup>	=	34.67

**Stoßboden**

R <sup>1)</sup>	=	1.65
R1	=	10.62
R2	=	
R3	=	
r	=	

**Pulverkammer**

E	=	
P1 <sup>1)</sup>	=	8.90
P2*	=	8.50

**Schulterkonus**

alpha*	=	33°8'
S*	=	36.08
r1 max	=	2.54
r2	=	4.70

**Hülsenhals**

H1*	=	7.15
H2 <sup>1)</sup>	=	7.07

**Geschossübergang**

G1 <sup>1)*</sup>	=	7.07
G <sup>1)</sup>	=	1.35
alpha1*	=	15°
h	=	
s	=	
i <sup>1)*</sup>	=	15°
w	=	

**Lauf**

F <sup>1)*</sup>	=	6.35
Z <sup>1)</sup>	=	6.50

**Züge**

b	=	1.98
N	=	6
u	=	356.00
Q	=	32.57 mm <sup>2</sup>

Maßstab 1:1

Maße in << mm >>  
Maße und Toleranzen für Messläufe  
siehe Anhang CR 1.

Bemerkungen: 1) Kontrolle aus Sicherheitsgründen  
\* Grundmaße