

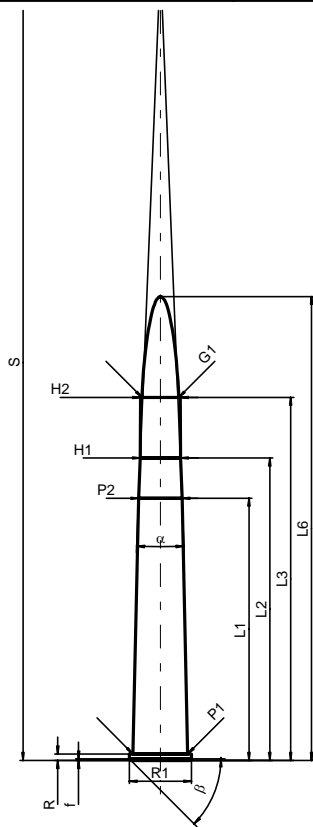
C.I.P.**7 x 72 R**

TAB. II

Datum 84-06-14

Revision 02-05-15

Ursprungsland: DE

**PATRONE MAXI****Längen**

L1 *	=	52.00
L2 *	=	60.00
L3 ¹⁾	=	72.00
L4	=	
L5	=	
L6	=	92.00

Hülsenboden

R ¹⁾	=	1.30	-0.25
R1	=	12.35	
R3	=		
E	=		
E1	=		
e min	=		
delta	=		
f	=	0.30	
beta	=	45°	

Pulverkammer

P1	=	10.85
P2 *	=	8.60

Schulterkonus

alpha	=	4°39'10"
S	=	157.85
r1 min	=	
r2	=	

Hülsenhals

H1 *	=	7.95
H2 ¹⁾	=	7.92

Geschoss

G1 ¹⁾	=	7.25
G2	=	
F	=	
L3+G ¹⁾	=	91.20

Drücke (Energien)**Mech. elektr. Wandler**

Pmax	=	2800 bar
PK	=	3220 bar
PE	=	3500 bar
M	=	25.00
EE	=	2890 Joule

Verschiedene Daten

Fe ¹⁾	=	0.15
delta L	=	

PATRONELAGER MINI**Längen**

L1 *	=	52.00
L2 *	=	60.00
L3 ¹⁾	=	72.30

Stoßboden

R ¹⁾	=	1.30
R1	=	12.40
R2	=	
R3	=	
r	=	

Pulverkammer

E	=	
P1 ¹⁾	=	10.88
P2 *	=	8.63

Schulterkonus

alpha	=	4°09'08"
S	=	171.03
r1 max	=	
r2	=	

Hülsenhals

H1 *	=	8.05
H2 ¹⁾	=	8.04

Geschossübergang

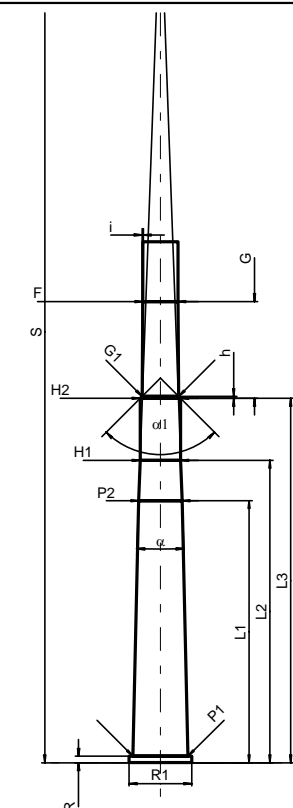
G1 ¹⁾ *	=	7.29
G ¹⁾ *	=	19.20
alpha1	=	90°
h *	=	0.38
s ¹⁾	=	
i	=	0°28'19"
w	=	

Lauf

F ¹⁾ *	=	6.98
Z ¹⁾	=	7.24

Züge

b	=	3.90
N	=	4
u	=	220.00
Q	=	40.41 mm ²



Maßstab 1:1.5

Maße in << mm >>
Maße und Toleranzen für Messläufe
siehe Anhang CR 1.

Bemerkungen: 1) Kontrolle aus Sicherheitsgründen
* Grundmaße