

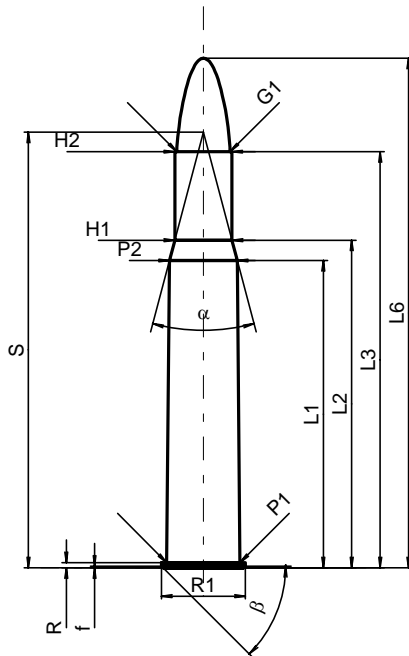
C.I.P.**500/416 N.E. 3"1/4**

TAB. II

Datum 96-12-20

Revision 02-05-15

Ursprungsland: DE

**PATRONE MAXI****Längen**

L1*	=	60.96
L2*	=	65.00
L3 ¹⁾	=	82.55
L4	=	
L5	=	
L6	=	101.09

Hülsenboden

R ¹⁾	=	1.02	-0.25
R1	=	16.64	
R3	=		
E	=		
E1	=		
e min	=		
delta	=		
f	=	0.30	
beta	=	45°	

Pulverkammer

P1	=	14.55
P2*	=	13.49

Schulterkonus

alpha	=	29°40'07"
S	=	86.43
r1 min	=	
r2	=	

Hülsenhals

H1*	=	11.35
H2 ¹⁾	=	11.33

Geschoss

G1 ¹⁾	=	10.57
G2	=	
F	=	
L3+G ¹⁾	=	90.17

Drücke (Energien)**Mech. elektr. Wandler**

Pmax	=	3150 bar
PK	=	3625 bar
PE	=	3940 bar
M	=	25.00
EE	=	6720 Joule

Verschiedene Daten

Fe ¹⁾	=	0.15
delta L	=	

PATRONENLAGER MINI**Längen**

L1*	=	60.99
L2*	=	65.03
L3 ¹⁾	=	82.85

Stoßboden

R ¹⁾	=	1.04
R1	=	16.89
R2	=	
R3	=	
r	=	

Pulverkammer

E	=	
P1 ¹⁾	=	14.58
P2*	=	13.51

Schulterkonus

alpha	=	29°32'10"
S	=	86.61
r1 max	=	3.00
r2	=	3.00

Hülsenhals

H1*	=	11.38
H2 ¹⁾	=	11.35

Geschossübergang

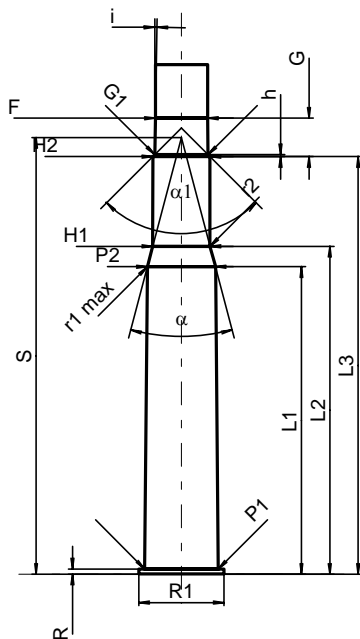
G1 ¹⁾ *	=	10.59
G ¹⁾ *	=	7.62
alpha1	=	90°
h*	=	0.38
s	=	
i ¹⁾	=	0°56'58"
w	=	

Lauf

F ¹⁾ *	=	10.35
Z ¹⁾	=	10.57

Züge

b	=	3.60
N	=	6
u	=	420.00
Q	=	86.56 mm ²



Maßstab 1:1.5

Maße in << mm >>
Maße und Toleranzen für Messläufe
siehe Anhang CR 1.

Bemerkungen: 1) Kontrolle aus Sicherheitsgründen
* Grundmaße