

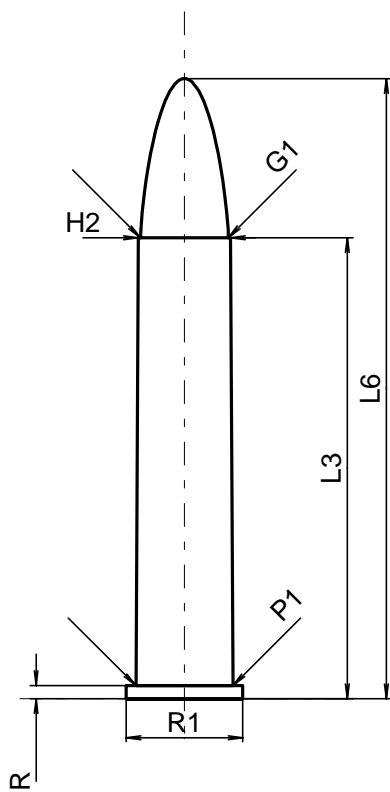
C.I.P.**45-90 WM**

Ursprungsland: DE

TAB. II

Datum 03-04-08

Revision 04-09-27

**PATRONE MAXI****Längen**

L1	=	
L2	=	
L3 ¹⁾	=	60.96
L4	=	
L5	=	
L6	=	82.00

Hülsenboden

R ¹⁾	=	1.73	-0.25
R1	=	15.44	
R3	=		
E	=		
E1	=		
e min	=		
δ	=		
f	=		
β	=		

Pulverkammer

P1	=	12.82
P2	=	

Schulterkonus

α	=	
S	=	
r1 min	=	
r2	=	

Hülsenhals

H1	=	
H2 ¹⁾	=	12.22

Geschoss

G1 ¹⁾	=	11.63
G2	=	
F	=	
L3+G ¹⁾	=	70.30

Drücke (Energien)**Mech. elektr. Wandler**

Pmax	=	2200 bar
PK	=	2530 bar
PE	=	2750 bar
M	=	25.00
EE	=	3650 Joule

Verschiedene Daten

Fe	=	0.15
delta L	=	

PATRONENLAGER MINI**Längen**

L1	=	
L2	=	
L3 ¹⁾	=	61.60

Stoßboden

R ¹⁾	=	1.73
R1	=	15.50
R2	=	
R3	=	
r	=	

Pulverkammer

E	=	
P1 ¹⁾	=	12.85
P2	=	

Schulterkonus

α	=	
S	=	
r1 max	=	
r2	=	

Hülsenhals

H1	=	
H2 ¹⁾	=	12.25

Geschossübergang

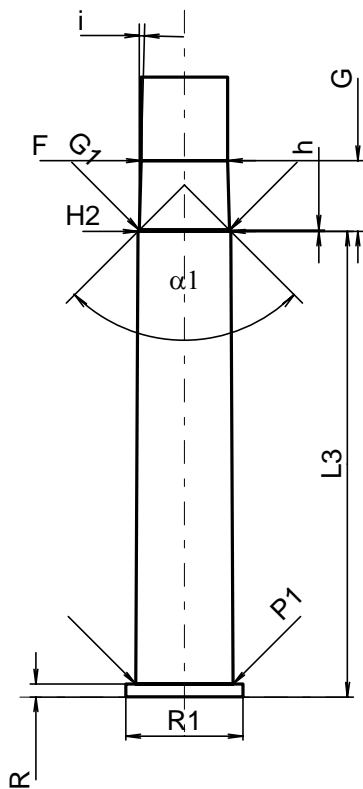
G1 ^{1)*}	=	11.91
G ^{1)*}	=	9.34
α1	=	90°
h*	=	0.17
s	=	
i ¹⁾	=	1°29'57"
w	=	

Lauf

F ^{1)*}	=	11.43
Z ¹⁾	=	11.58

Züge

b	=	3.58
N	=	6
u	=	508.00
Q	=	104.25 mm ²



Maßstab 1:1

Maße in << mm >>
Maße und Toleranzen für Messläufe
siehe Anhang CR 1.

Bemerkungen: 1) Kontrolle aus Sicherheitsgründen
* Grundmaße