

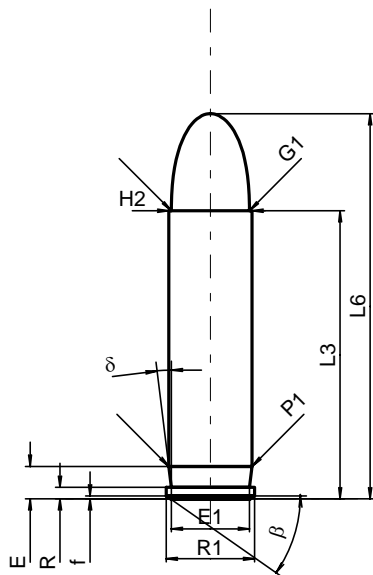
C.I.P.**401 Win. SL**

TAB. II

Datum 84-06-14

Revision 02-05-15

Ursprungsland: US

**PATRONE MAXI****Längen**

L1	=	
L2	=	
L3 ¹⁾	=	38.10
L4	=	
L5	=	
L6	=	50.93

Hülsenboden

R ¹⁾	=	1.52	-0.25
R1	=	11.68	
R3	=		
E	=	4.30	
E1	=	10.31	
e min	=		
delta	=	7°	
f	=	0.38	
beta	=	35°	

Pulverkammer

P1	=	11.00
P2	=	

Schulterkonus

alpha	=	
S	=	
r1 min	=	
r2	=	

Hülsenhals

H1	=	
H2 ¹⁾	=	10.99

Geschoss

G1 ¹⁾	=	10.34
G2	=	
F	=	
L3+G ¹⁾	=	48.80

Drücke (Energien)**Mech. elektr. Wandler**

Pmax	=	2450 bar
PK	=	2818 bar
PE	=	3060 bar
M	=	25.00
EE	=	2655 Joule

Verschiedene Daten

Fe ¹⁾	=	0.15
delta L	=	

PATRONENLAGER MINI**Längen**

L1	=	
L2	=	
L3 ¹⁾	=	38.00

Stoßboden

R ¹⁾	=	1.52
R1	=	11.91
R2	=	
R3	=	
r	=	

Pulverkammer

E	=	
P1 ¹⁾	=	11.13
P2	=	

Schulterkonus

alpha	=	
S	=	
r1 max	=	
r2	=	

Hülsenhals

H1	=	
H2 ¹⁾	=	11.05

Geschossübergang

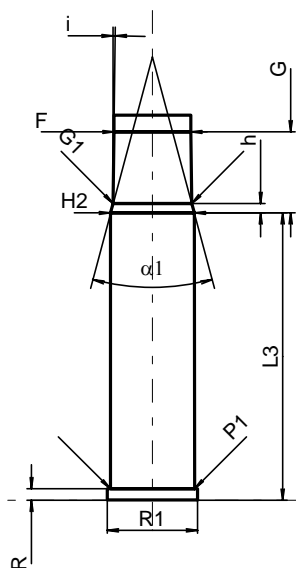
G1 ^{1)*}	=	10.38
G ¹⁾	=	10.70
alpha1*	=	30°
h	=	1.25
s	=	
i ^{1)*}	=	0°40'
w	=	

Lauf

F ^{1)*}	=	10.16
Z ¹⁾	=	10.33

Züge

b	=	3.19
N	=	6
u	=	406.00
Q	=	82.73 mm ²



Maßstab 1:1

Maße in << mm >>
Maße und Toleranzen für Messläufe
siehe Anhang CR 1.

Bemerkungen: 1) Kontrolle aus Sicherheitsgründen
* Grundmaße