

C.I.P.**8,5 x 75 R Scheiring**

TAB.

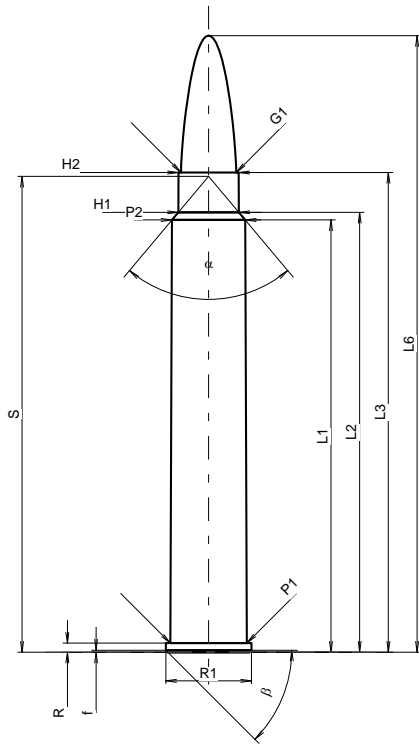
II

Date

14-05-20

Country of Origin: AT

Revision

**CARTRIDGE MAXI****Lengths**

L1	=	67.30
L2	=	68.50
L3 ¹⁾	=	74.70
L4	=	
L5	=	
L6	=	96.00

Case Head

R ¹⁾	=	1.40	-0.25
R1	=	13.35	
R3	=		
E	=		
E1	=		
e min	=		
delta	=		
f	=	0.30	
beta	=	45°	

Powder Chamber

P1	=	11.90
P2 *	=	11.43

Junction Cone

alpha *	=	80°
S *	=	74.10
r1 min	=	
r2	=	

Collar

H1 *	=	9.41
H2 ¹⁾	=	9.38

Projectile

G1 ¹⁾	=	8.61
G2	=	
F	=	
L3+G ¹⁾	=	83.70

Pressures (Energies)**Method Transducer**

Pmax	=	3800 bar
PK	=	4370 bar
PE	=	4750 bar
M	=	25.00
EE	=	5500 Joule

Miscellaneous Dimensions

Fe ¹⁾⁴⁾	=	0.15
delta L	=	

CHAMBER MINI**Lengths**

L1	=	67.31
L2	=	68.51
L3 ¹⁾	=	75.00

Breech

R ¹⁾	=	1.40
R1	=	13.40
R2	=	
R3	=	
r	=	

Powder Chamber

E	=	
P1 ¹⁾	=	11.93
P2 *	=	11.46

Junction Cone

alpha *	=	80°
S *	=	74.14
r1 max	=	
r2	=	

Collar

H1 *	=	9.44
H2 ¹⁾	=	9.41

Commencement of Rifling

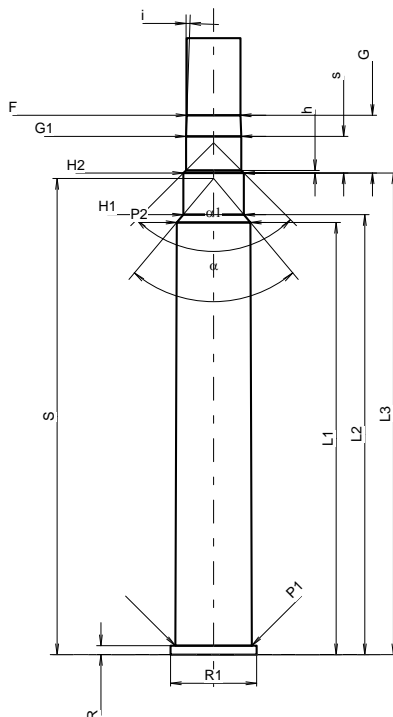
G1 ¹⁾ *	=	8.61
G ¹⁾	=	9.00
alpha l	=	90°
h	=	0.40
s *	=	5.71
i ¹⁾ *	=	2°
w	=	

Barrel

F ¹⁾ *	=	8.38
Z ¹⁾	=	8.59

Grooves

b	=	2.79
N	=	6
u	=	254.00
Q	=	56.95 mm ²



Scale 1:1.18

Dimensions in << mm >>
Dimensions and Tolerances for Proof Barrels
see Appendix CR1.

Notes: 1) Check for safety reasons
4) Headspace on Rim
* Basic dimensions