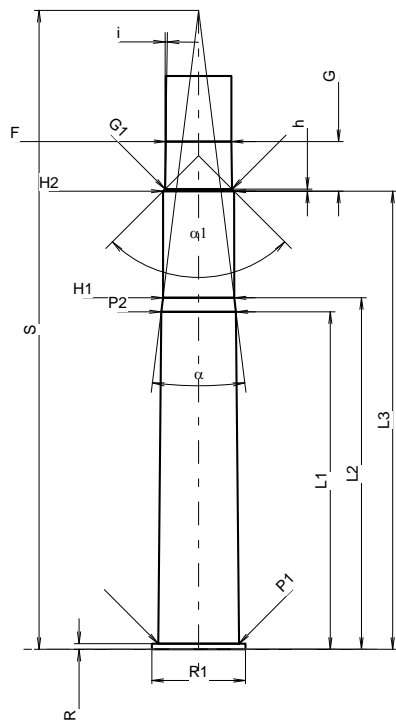
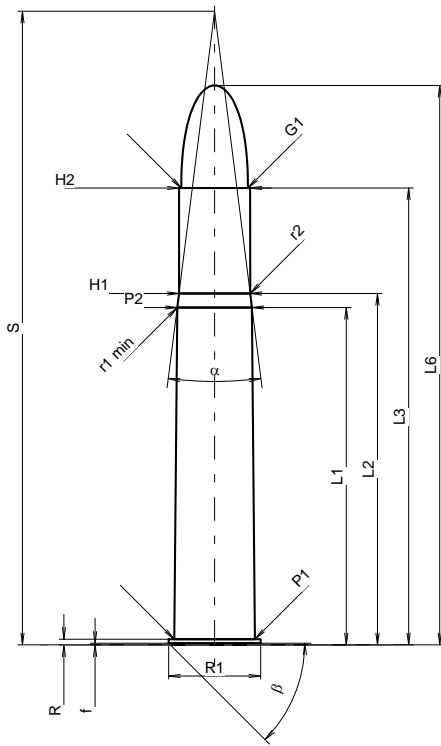


C.I.P.

470 N.E.

Country of Origin: GB

TAB.	II
Date	84-06-14
Revision	13-05-22



Scale 1:1.37

Dimensions in << mm >>
Dimensions and Tolerances for Proof Barrels
see Appendix CR 1.

CARTRIDGE MAXI

Lengths

L1 *	=	60.96
L2 *	=	63.50
L3 ¹⁾	=	82.55
L4	=	
L5	=	
L6	=	101.09

Case Head

R ¹⁾	=	1.02	-0.25
R1	=	16.64	
R3	=		
E	=		
E1	=		
e min	=		
delta	=		
f	=	0.30	
beta	=	45°	

Powder Chamber

P1	=	14.55
P2 *	=	13.49

Junction Cone

alpha	=	14°21'39"
S	=	114.50
r1 min	=	6.35
r2	=	6.35

Collar

H1 *	=	12.85
H2 ¹⁾	=	12.80

Projectile

G1 ¹⁾	=	12.04
G2	=	
F	=	
L3+G ¹⁾	=	91.51

Pressures (Energies)

Method Transducer

Pmax	=	2700 bar
PK	=	3105 bar
PE	=	3375 bar
M	=	25.00
EE	=	6957 Joule

Miscellaneous Dimensions

Fe ¹⁾⁴⁾	=	0.15
delta L	=	

CHAMBER MINI

Lengths

L1 *	=	60.99
L2 *	=	63.53
L3 ¹⁾	=	82.80

Breech

R ¹⁾	=	1.04
R1	=	16.89
R2	=	
R3	=	
r	=	

Powder Chamber

E	=	
P1 ¹⁾	=	14.58
P2 *	=	13.51

Junction Cone

alpha	=	14°08'20"
S	=	115.46
r1 max	=	
r2	=	

Collar

H1 *	=	12.88
H2 ¹⁾	=	12.83

Commencement of Rifling

G1 ¹⁾ *	=	12.10
G ¹⁾ *	=	8.96
alpha1	=	90°
h *	=	0.37
s	=	
i ¹⁾	=	0°50'
w	=	

Barrel

F ¹⁾ *	=	11.85
Z ¹⁾	=	12.05

Grooves

b	=	3.48
N	=	7
u	=	533.00
Q	=	112.76 mm ²

Notes: 1) Check for safety reasons
4) Headspace on Rim
* Basic dimensions