

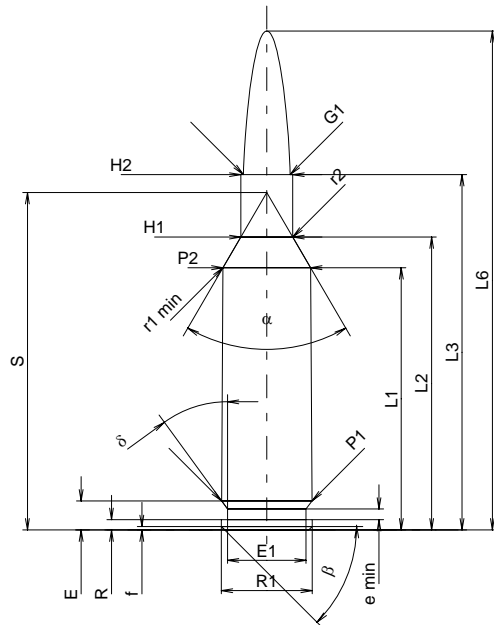
C.I.P.**6 x 47 SM**

TAB. I

Date 02-01-22

Pays d'origine: CH

Révision 02-05-15

**CARTOUCHE MAXI****Longueurs**

L1 ¹⁾	=	34.69	-0.20
L2 ¹⁾	=	38.74	-0.20
L3 ¹⁾	=	47.00	
L4	=		
L5	=		
L6	=	66.00	

Culot

R	=	1.37	
R1	=	12.01	
R3	=		
E	=	3.85	
E1	=	10.39	
e min	=	1.40	
delta	=	36°	
f	=	0.45	
beta	=	45°	

Chambre à poudre

P1	=	11.96	
P2 ¹⁾ *	=	11.59	-0.20

Cône de raccordement

alpha *	=	60°30'	
S *	=	44.63	
r1 min	=	1.50	
r2	=	1.50	

Collet

H1 *	=	6.87	
H2 ¹⁾	=	6.87	

Projectile

G1 ¹⁾	=	6.18	
G2	=		
F	=		
L3+G ¹⁾	=	52.98	

Pressions (Énergies)**Méthode transducteur**

Pmax	=	3900 bar	
PK	=	4485 bar	
PE	=	4875 bar	
M	=	25.00	
EE	=	2730 Joule	

Autres indications

Fe ¹⁾	=	0.10	
delta L	=		

CHAMBRE MINI**Longueurs**

L1	=	34.51	
L2	=	38.66	
L3 ¹⁾	=	47.26	

Cuvette

R	=		
R1	=	12.04	
R2	=		
R3	=		
r	=		

Chambre à poudre

E	=	3.85	
P1 ¹⁾	=	11.99	
P2 *	=	11.70	

Cône de raccordement

alpha ¹⁾ *	=	60°	
S *	=	44.64	
r1 max	=	0.64	
r2	=	1.91	

Collet

H1 *	=	6.91	
H2 ¹⁾	=	6.88	

Prise de rayures

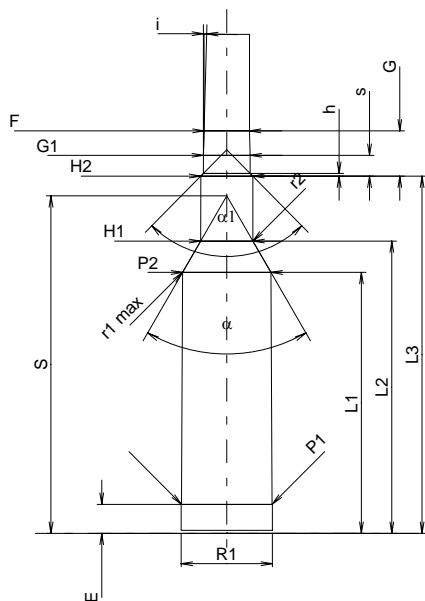
G1 ¹⁾ *	=	6.19	
G ¹⁾	=	5.98	
alpha 1	=	89°10'32"	
h	=	0.35	
s *	=	2.74	
i ¹⁾ *	=	1°35'24"	
w	=		

Canon

F ¹⁾ *	=	6.01	
Z ¹⁾	=	6.17	

Rayures

b	=	2.15	
N	=	6	
u	=	205.00	
Q	=	29.42	mm ²



Échelle 1:1

Dimensions en << mm >>
Dimensions et tolérances pour les canons
d'épreuve: Voyez Annexe CR 1.

Notes: 1) A' contrôler pour la sécurité
* Dimensions de base