

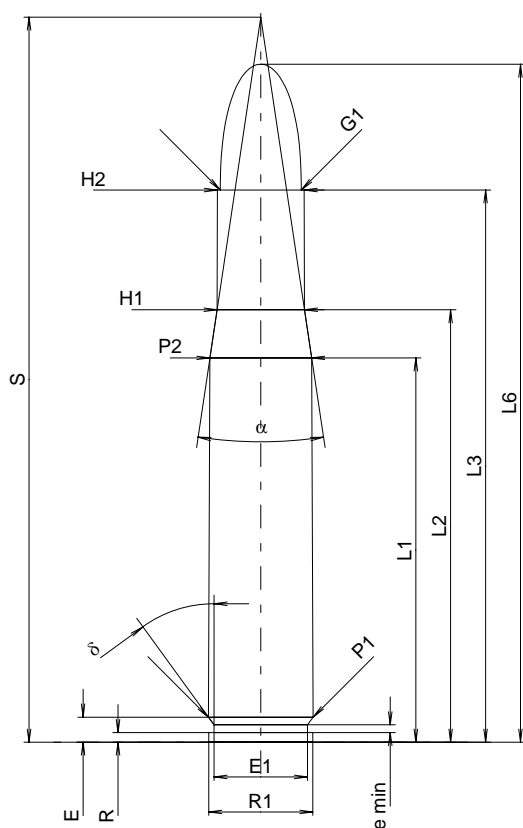
C.I.P.**404 Riml. N.E.**

TAB. I

Date 84-06-14

Pays d'origine: GB

Révision 02-05-15

**CARTOUCHE MAXI****Longueurs**

L1 ¹⁾ *	=	50.82	-0.20
L2 ¹⁾ *	=	57.18	-0.20
L3 ¹⁾	=	73.02	
L4	=		
L5	=		
L6	=	89.66	

Culot

R	=	1.27	
R1	=	13.79	
R3	=		
E	=	3.30	
E1	=	12.37	
e min	=	1.02	
delta	=	36°02'39"	
f	=		
beta	=		

Chambre à poudre

P1	=	13.84	
P2 ¹⁾ *	=	13.46	-0.20

Cône de raccordement

alpha	=	16°37'50"	
S	=	95.88	
r1 min	=		
r2	=		

Collet

H1 *	=	11.56	
H2 ¹⁾	=	11.48	

Projectile

G1 ¹⁾	=	10.72	
G2	=		
F	=		
L3+G ¹⁾	=	80.64	

Pressions (Énergies)**Méthode transducteur**

Pmax	=	3650 bar	
PK	=	4198 bar	
PE	=	4560 bar	
M	=	25.00	
EE	=	6815 Joule	

Autres indications

Fe ¹⁾	=	0.15	
delta L	=		

CHAMBRE MINI**Longueurs**

L1 *	=	50.77	
L2 *	=	57.13	
L3 ¹⁾	=	73.33	

Cuvette

R	=	1.27	
R1	=	13.84	
R2	=		
R3	=		
r	=		

Chambre à poudre

E	=	3.30	
P1 ¹⁾	=	13.87	
P2 *	=	13.49	

Cône de raccordement

alpha ¹⁾	=	17°04'45"	
S	=	95.69	
r1 max	=		
r2	=		

Collet

H1 *	=	11.58	
H2 ¹⁾	=	11.51	

Prise de rayures

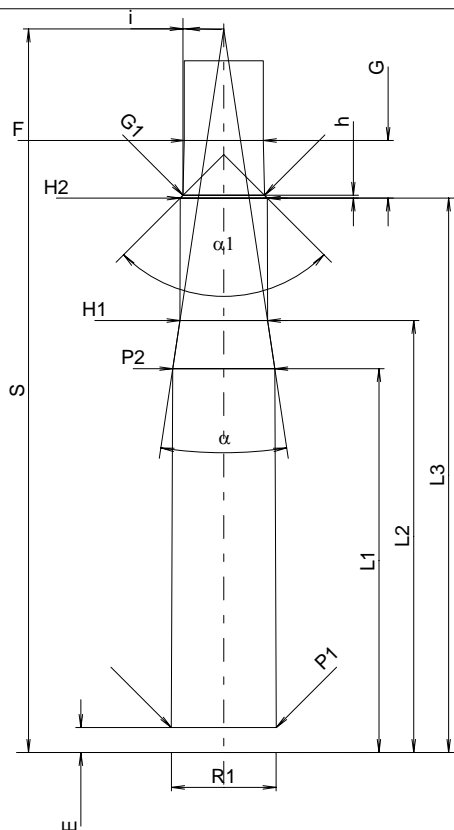
G1 ¹⁾ *	=	10.77	
G ¹⁾ *	=	7.62	
alpha1	=	90°	
h *	=	0.37	
s	=		
i ¹⁾	=	1°13'29"	
w	=		

Canon

F ¹⁾ *	=	10.46	
Z ¹⁾	=	10.77	

Rayures

b	=	3.50	
N	=	6	
u	=	420.00	
Q	=	89.25	mm ²



Échelle 1:1

Dimensions en << mm >>
Dimensions et tolérances pour les canons
d'épreuve: Voyez Annexe CR 1.

Notes: 1) A' contrôler pour la sécurité
* Dimensions de base