

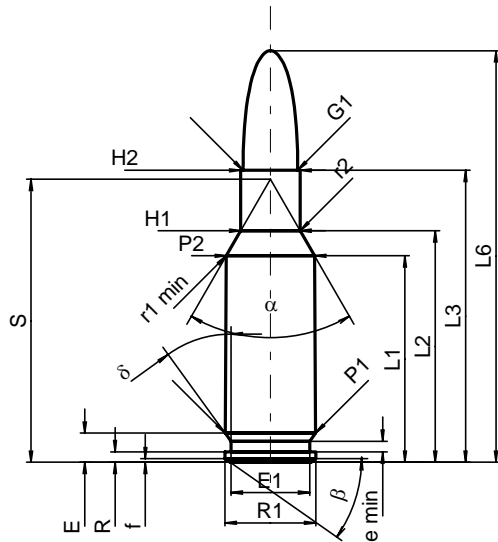
**C.I.P.****7 mm BR Rem.**

TAB. I

Datum 94-03-01

Revision 02-05-15

Ursprungsland: US

**PATRONE MAXI****Längen**

L1 <sup>1)</sup>	=	27.30	-0.20
L2 <sup>1)</sup>	=	30.61	-0.20
L3 <sup>1)</sup>	=	38.61	
L4	=		
L5	=		
L6	=	54.42	

**Hülsenboden**

R	=	1.37	
R1	=	12.01	
R3	=		
E	=	3.85	
E1	=	10.39	
e min	=	1.40	
delta	=	36°	
f	=	0.46	
beta	=	35°	

**Pulverkammer**

P1	=	11.96	
P2 <sup>1)*</sup>	=	11.68	-0.20

**Schulterkonus**

alpha*	=	60°	
S*	=	37.42	
r1 min	=	0.64	
r2	=	1.27	

**Hülsenhals**

H1*	=	7.86	
H2 <sup>1)</sup>	=	7.84	

**Geschoss**

G1 <sup>1)</sup>	=	7.23	
G2	=		
F	=		
L3+G <sup>1)</sup>	=	43.62	

**Drücke (Energien)****Mech. elektr. Wandler**

Pmax	=	4050 bar	
PK	=	4658 bar	
PE	=	5060 bar	
M	=	17.50	
EE	=	3150 Joule	

**Verschiedene Daten**

Fe <sup>1)</sup>	=	0.10	
delta L	=	0.08	

**PATRONENLAGER MINI****Längen**

L1	=	27.20	
L2	=	30.52	
L3 <sup>1)</sup>	=	38.86	

**Stoßboden**

R	=		
R1	=	12.04	
R2	=		
R3	=		
r	=		

**Pulverkammer**

E	=	3.85	
P1 <sup>1)</sup>	=	11.99	
P2*	=	11.71	

**Schulterkonus**

alpha <sup>1)*</sup>	=	60°	
S*	=	37.34	
r1 max	=	0.64	
r2	=	1.91	

**Hülsenhals**

H1*	=	7.87	
H2 <sup>1)</sup>	=	7.85	

**Geschossübergang**

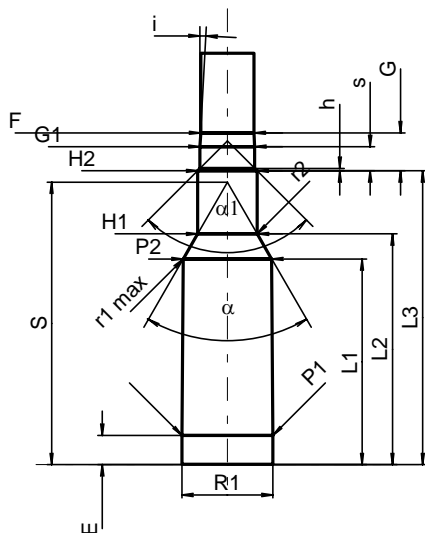
G1 <sup>1)*</sup>	=	7.23	
G <sup>1)</sup>	=	5.01	
alpha1*	=	90°	
h	=	0.31	
s	=	3.20	
i <sup>1)*</sup>	=	3°	
w	=		

**Lauf**

F <sup>1)*</sup>	=	7.04	
Z <sup>1)</sup>	=	7.21	

**Züge**

b	=	2.79	
N	=	6	
u	=	241.30	
Q	=	40.39	mm <sup>2</sup>



Maßstab 1:1

Maße in << mm >>  
Maße und Toleranzen für Messläufe  
siehe Anhang CR 1.

Bemerkungen: 1) Kontrolle aus Sicherheitsgründen  
\* Grundmaße