

**C.I.P.****6,5 mm D.B.G.**

TAB.

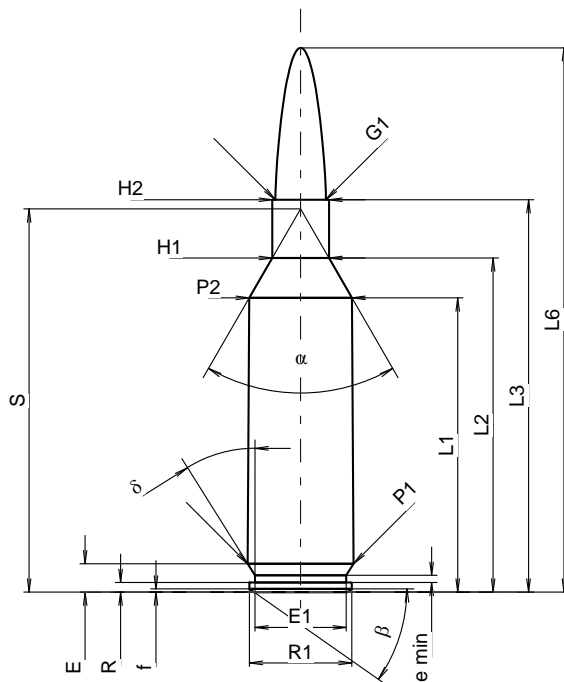
I

Datum

15-05-19

Revision

Ursprungsland: IT

**PATRONE MAXI****Längen**

L1 <sup>1)</sup>	=	38.92	-0.20
L2 <sup>1)</sup>	=	44.19	-0.20
L3 <sup>1)</sup>	=	51.90	
L4	=		
L5	=		
L6	=	72.00	

**Hülsenboden**

R	=	1.27	
R1	=	13.56	
R3	=		
E	=	3.75	
E1	=	12.07	
e min	=	0.94	
delta	=	32°	
f	=	0.41	
beta	=	35°	

**Pulverkammer**

P1	=	14.00	
P2 <sup>1)</sup> *	=	13.59	-0.20

**Schulterkonus**

alpha *	=	60°02'18"	
S *	=	50.68	
r1 min	=		
r2	=		

**Hülsenhals**

H1 *	=	7.50	
H2 <sup>1)</sup>	=	7.50	

**Geschoss**

G1 <sup>1)</sup>	=	6.71	
G2	=		
F	=		
L3+G <sup>1)</sup>	=	58.62	

**Drücke (Energien)****Mech. elektr. Wandler**

Pmax	=	4400 bar	
PK	=	5060 bar	
PE	=	5500 bar	
M	=	25.00	
EE	=	3800 Joule	

**Verschiedene Daten**

Fe <sup>1)3)</sup>	=	0.10	
delta L	=		

**PATRONENLAGER MINI****Längen**

L1	=	38.95	
L2	=	44.22	
L3 <sup>1)</sup>	=	51.93	

**Stoßboden**

R	=		
R1	=	14.05	
R2	=		
R3	=		
r	=		

**Pulverkammer**

E	=	3.75	
P1 <sup>1)</sup>	=	14.02	
P2 *	=	13.60	

**Schulterkonus**

alpha <sup>1)</sup> *	=	59°57'25"	
S *	=	50.74	
r1 max	=		
r2	=		

**Hülsenhals**

H1 *	=	7.52	
H2 <sup>1)</sup>	=	7.52	

**Geschossübergang**

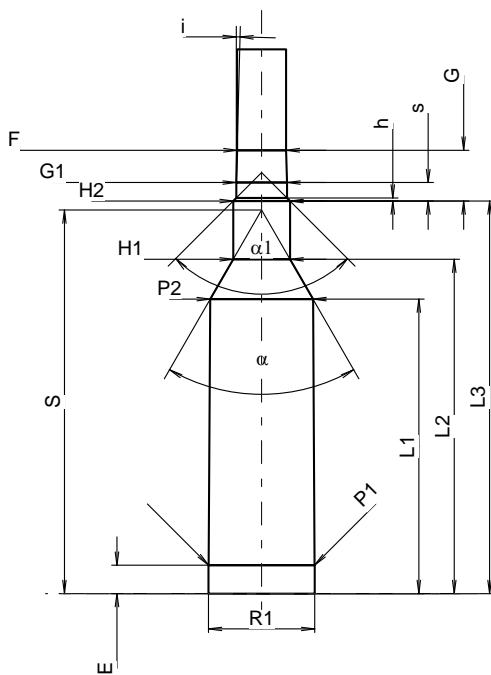
G1 <sup>1)</sup> *	=	6.72	
G <sup>1)</sup>	=	6.72	
alpha 1	=	90°	
h	=	0.40	
s *	=	2.44	
i <sup>1)</sup> *	=	1°28'20"	
w	=		

**Lauf**

F <sup>1)</sup> *	=	6.50	
Z <sup>1)</sup>	=	6.71	

**Züge**

b	=	1.73	
N	=	6	
u *	=	254.00	
Q	=	34.29	mm <sup>2</sup>



Maßstab 1:1

Maße in << mm >>  
Maße und Toleranzen für Messläufe  
siehe Anhang .

Bemerkungen: 1) Kontrolle aus Sicherheitsgründen  
3) Verschlussabstand an Schulter  
\* Grundmaße