

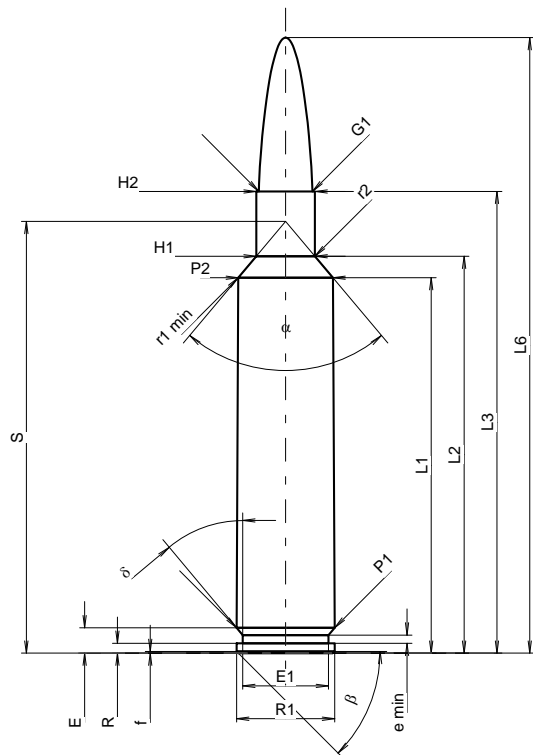
**C.I.P.****6,3 x 57 Farè**

TAB. I

Datum 12-05-30

Ursprungsland: IT

Revision

**PATRONE MAXI****Längen**

L1 <sup>1)</sup>	=	45.75	-0.20
L2 <sup>1)</sup>	=	48.35	-0.20
L3 <sup>1)</sup>	=	56.26	
L4	=		
L5	=		
L6	=	75.00	

**Hülsenboden**

R	=	1.20	
R1	=	11.94	
R3	=		
E	=	3.09	
E1	=	10.45	
e min	=	1.00	
delta	=	40°	
f	=	0.20	
beta	=	45°	

**Pulverkammer**

P1	=	11.94	
P2 <sup>1)</sup> *	=	11.53	-0.20

**Schulterkonus**

alpha *	=	80°	
S *	=	52.61	
r1 min	=	0.76	
r2	=	1.17	

**Hülsenhals**

H1 *	=	7.16	
H2 <sup>1)</sup>	=	7.16	

**Geschoss**

G1 <sup>1)</sup>	=	6.52	
G2	=		
F	=	6.35	
L3+G <sup>1)</sup>	=	62.38	

**Drücke (Energien)****Mech. elektr. Wandler**

Pmax	=	4400 bar	
PK	=	5060 bar	
PE	=	5500 bar	
M	=	25.00	
EE	=	3300 Joule	

**Verschiedene Daten**

Fe <sup>1)3)</sup>	=	0.10	
delta L	=		

**PATRONENLAGER MINI****Längen**

L1	=	45.79	
L2	=	48.35	
L3 <sup>1)</sup>	=	56.72	

**Stoßboden**

R	=		
R1	=	12.00	
R2	=		
R3	=		
r	=		

**Pulverkammer**

E	=	3.09	
P1 <sup>1)</sup>	=	11.97	
P2 *	=	11.56	

**Schulterkonus**

alpha <sup>1)</sup> *	=	80°	
S *	=	52.67	
r1 max	=	0.76	
r2	=	1.57	

**Hülsenhals**

H1 *	=	7.26	
H2 <sup>1)</sup>	=	7.26	

**Geschossübergang**

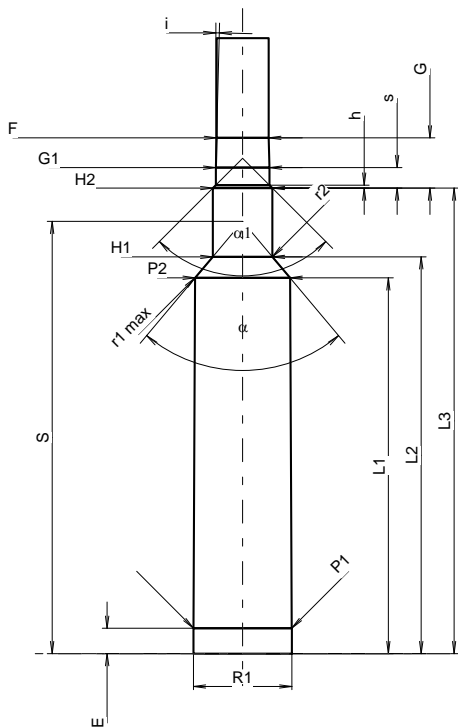
G1 <sup>1)</sup> *	=	6.54	
G <sup>1)</sup>	=	6.12	
alpha l	=	90°	
h	=	0.36	
s *	=	2.49	
i <sup>1)</sup> *	=	1°30'	
w	=		

**Lauf**

F <sup>1)</sup> *	=	6.35	
Z <sup>1)</sup>	=	6.52	

**Züge**

b	=	2.50	
N	=	6	
u	=	254.00	
Q	=	32.98	mm <sup>2</sup>



Maßstab 1.09:1

Maße in << mm >>  
Maße und Toleranzen für Messläufe  
siehe Anhang CR 1.

Bemerkungen: 1) Kontrolle aus Sicherheitsgründen  
3) Verschlussabstand an Schulter  
\* Grundmaße